



TIMBERLINE

TRANSFER

SUSANVILLE

CALIFORNIA

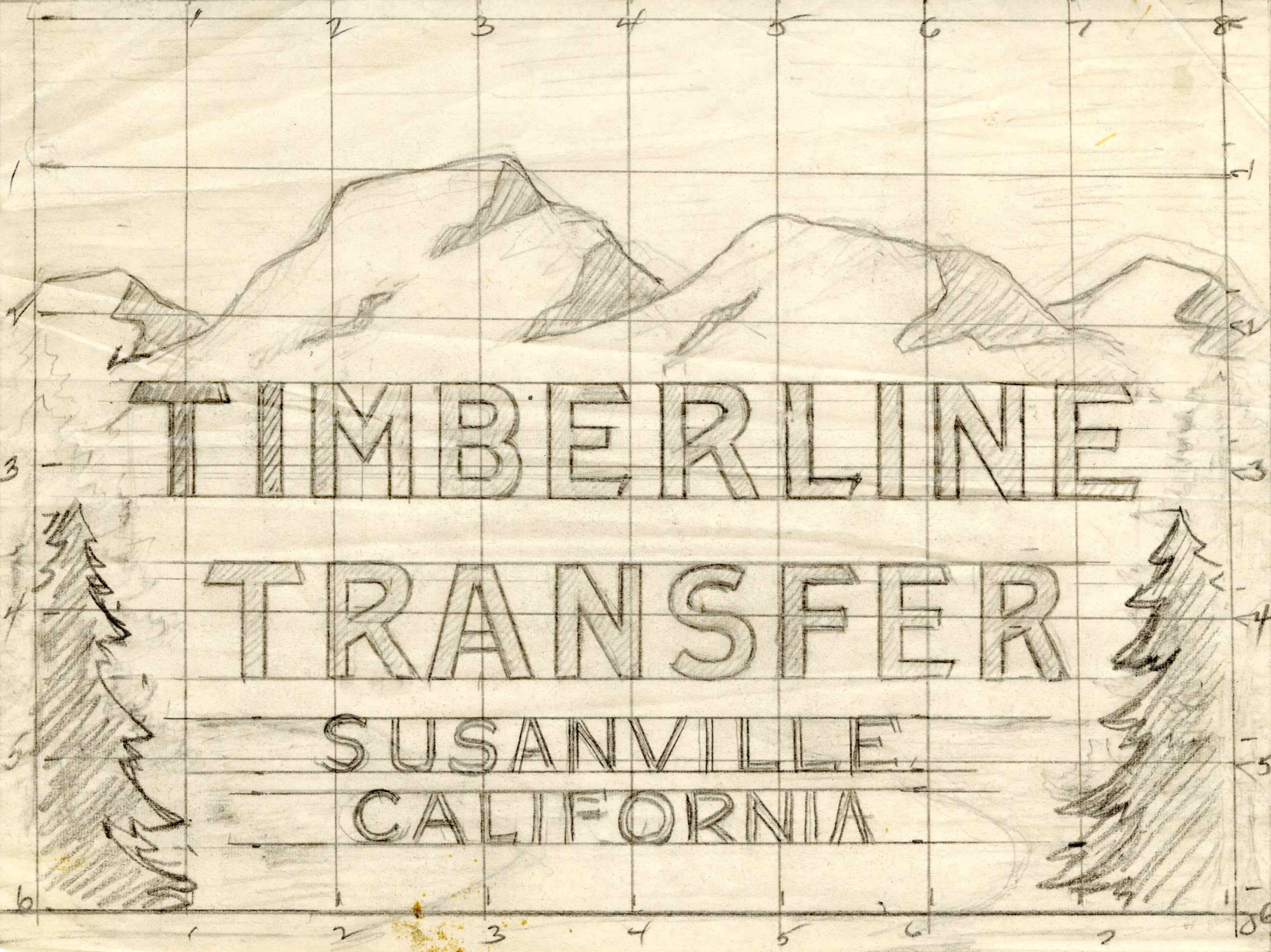
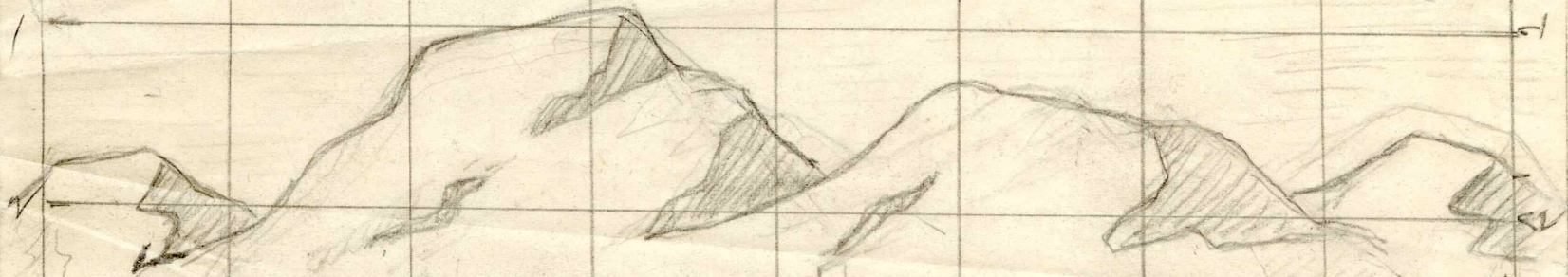


TIMBERLINE

TRANSFER

SUSANVILLE

CALIFORNIA





WATCH YOUR CREDIT LINE:
PHOTO FROM: WIDE WORLD PHOTOS.-

578231- BYRD PLANE TESTED FOR
POLAR FLIGHTS.-

ROOSEVELT FIELD, N.Y.---THE HUGE
TRI-MOTORED FORD MONOPLANE "FLOYD
BENNETT," AFTER IT WAS FLOWN TO
ROOSEVELT FIELD, L.I., FOR TESTS TO
ASCERTAIN THE MAXIMUM WEIGHT THE
SHIP CARRY AT AN ALTITUDE OF 10,000
FEET. THIS IS THE HEIGHT THAT BYRD
WILL FLY AT WHEN HE MAKES HIS FLIGHT
OVER THE ANTARCTIC. PILOTS BERNT
BALCHEN AND HAROLD I. JUNE, CHIEF
PETTY OFFICER, U.S.N., ARE SHOWN AT
THE LEFT.-

6/15/28.-



WIDE WORLD PHOTO

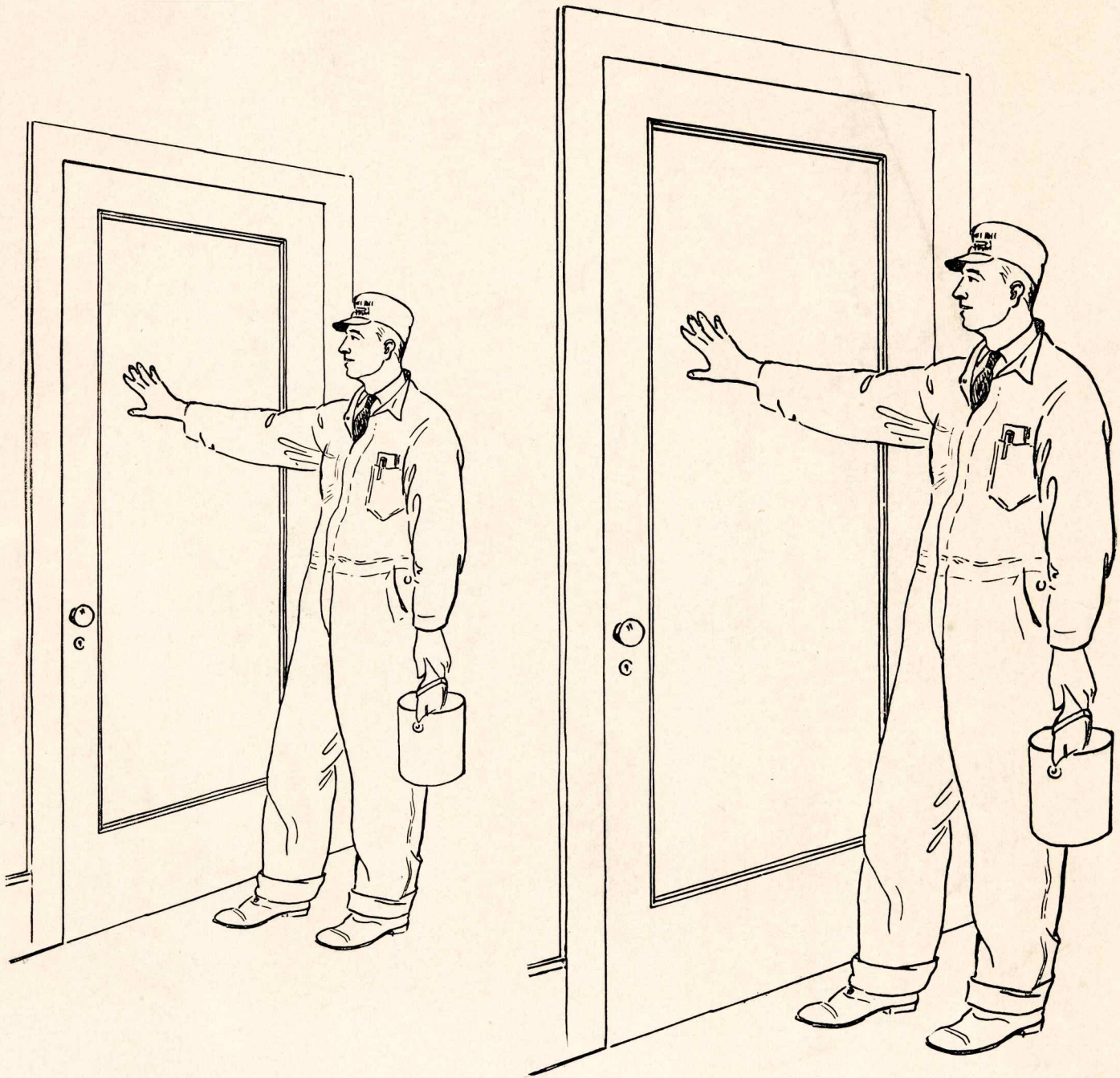
Credit line on Plate

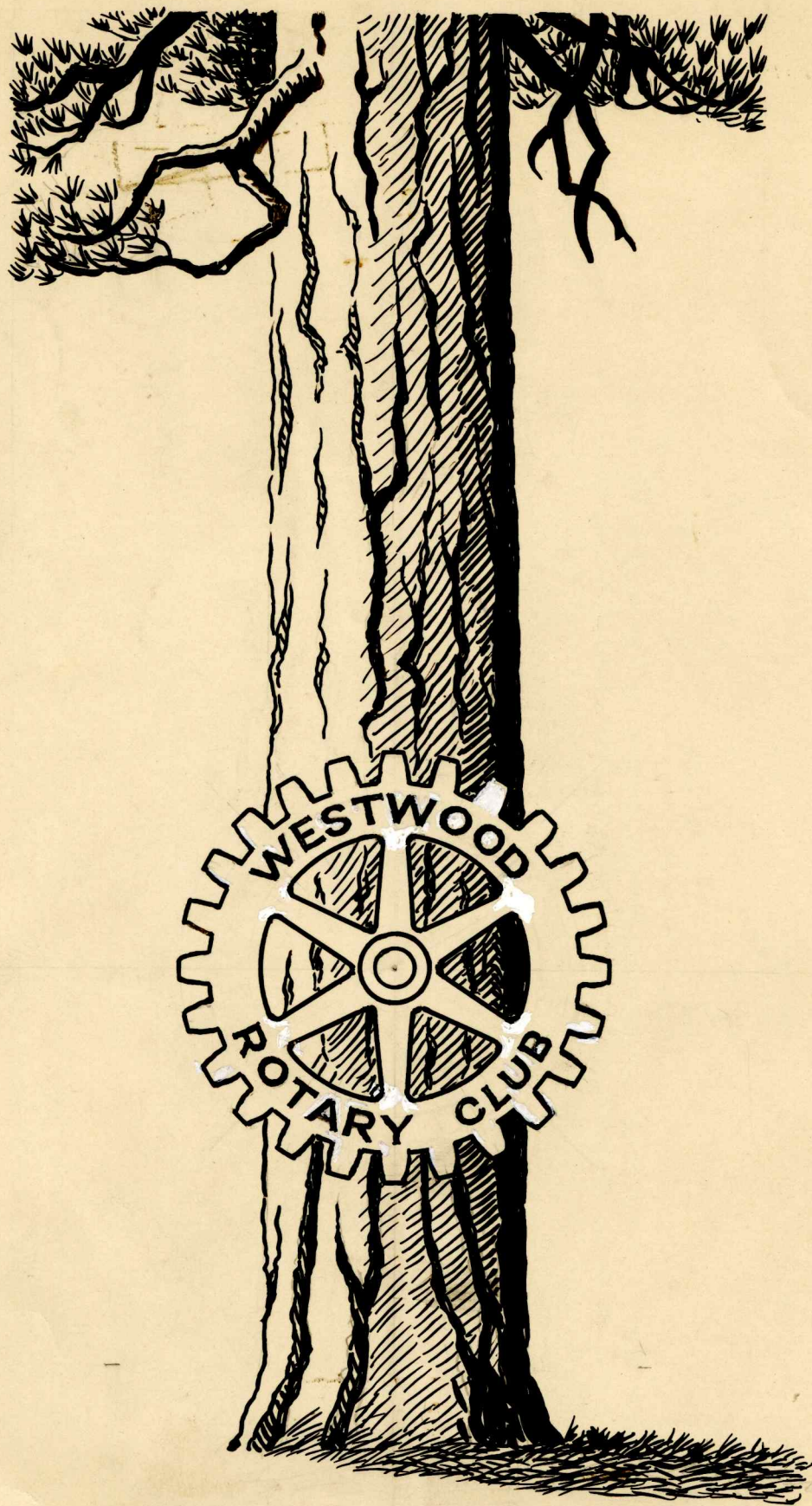
cut out
Human
Figures
here

TO 6"

One H.T. 110 Screen
4 Electros.



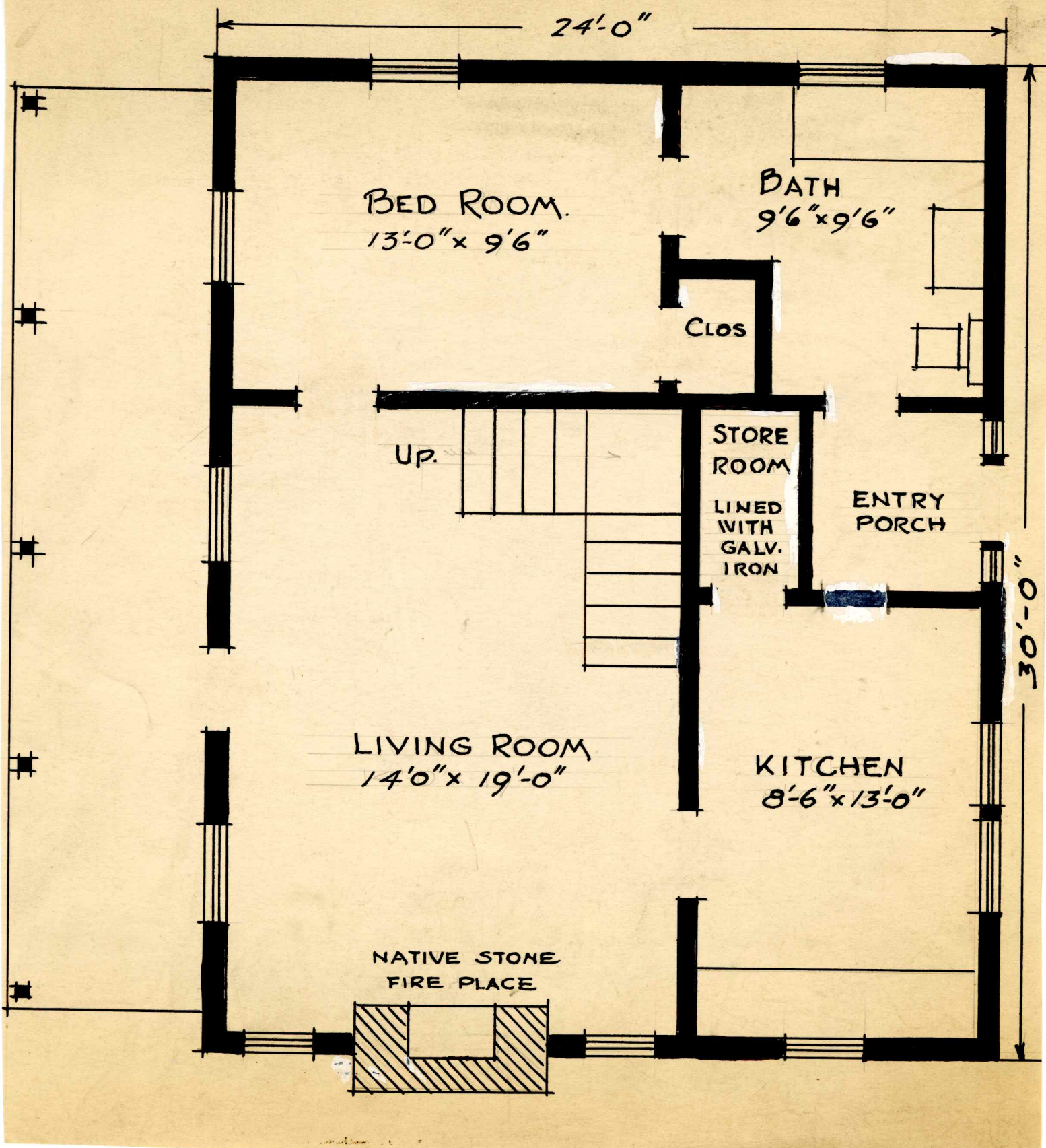




TO 3"

ONE PINCO

The Red River Lumber Co.
Westwood - Cal.
Order # 641-MO.
Feb-13-1938.



Doo's

Timbers

Box Beams

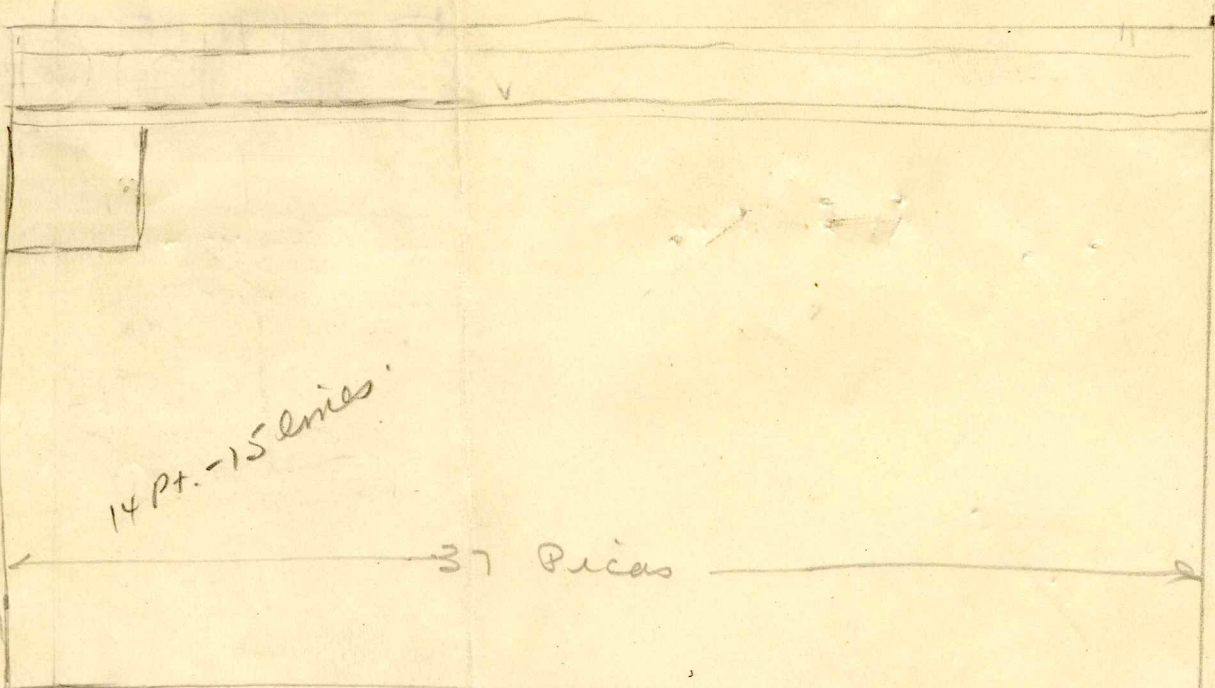
Mouldings

and Trim

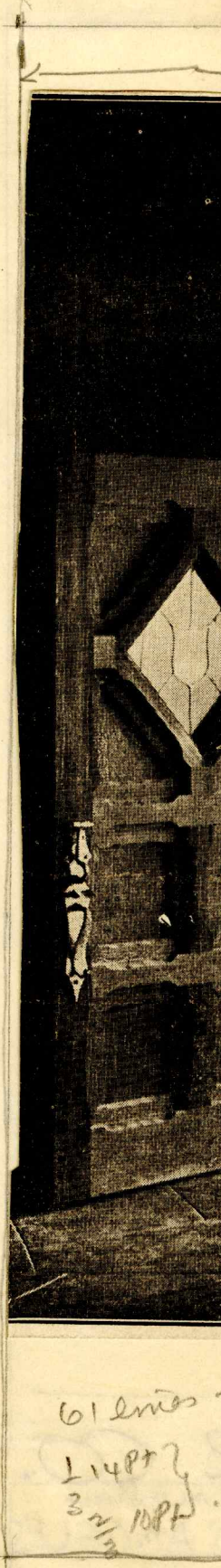
The RED RIVER LUMBER CO.

MILL, FACTORIES and GENERAL SALES WESTWOOD CALIFORNIA

702 E. SLAUSEN AVE, LOS ANGELES

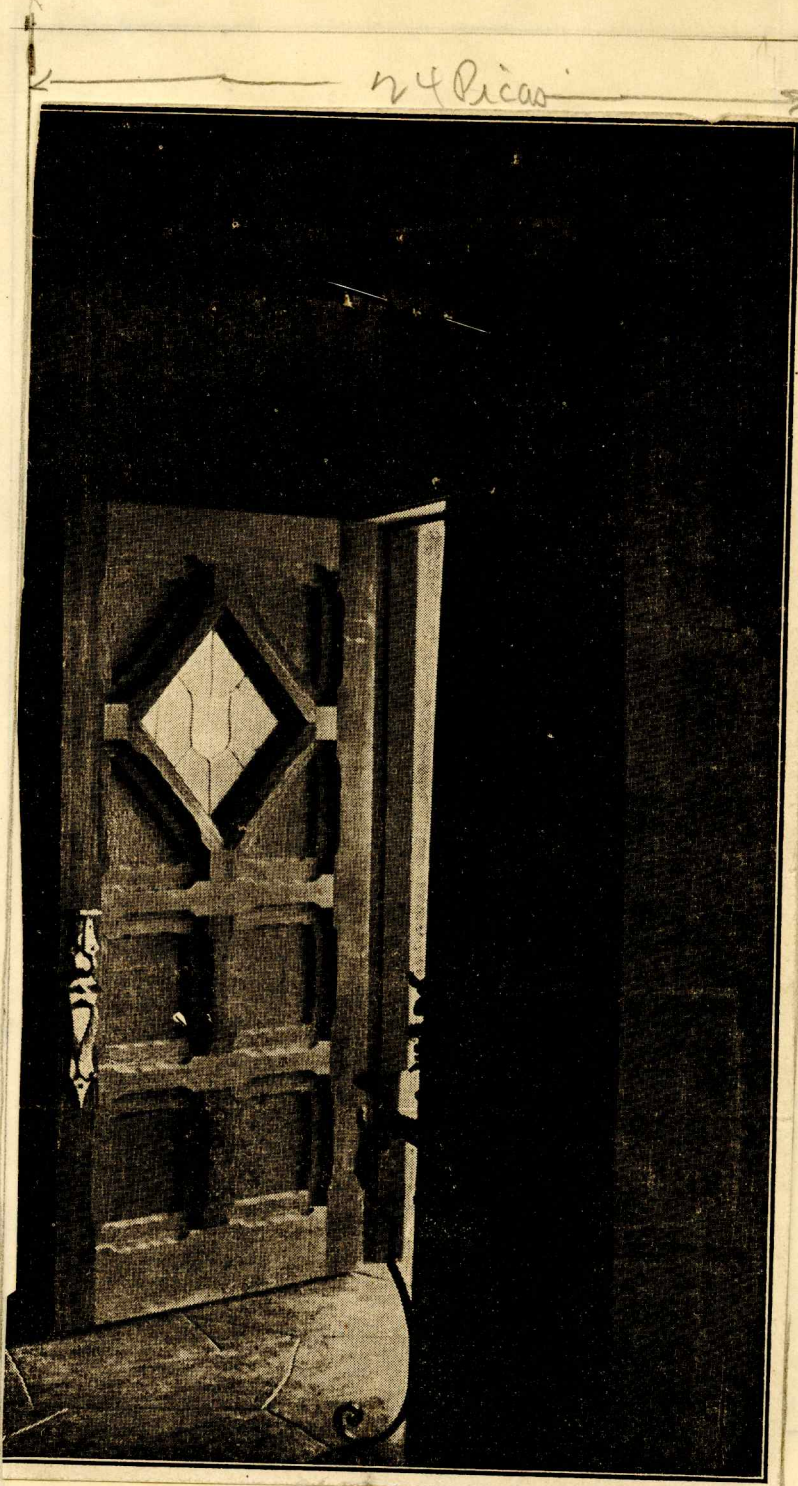


12 Picas
 36 lines 10 Pt.
 Type
 = 36 x 22

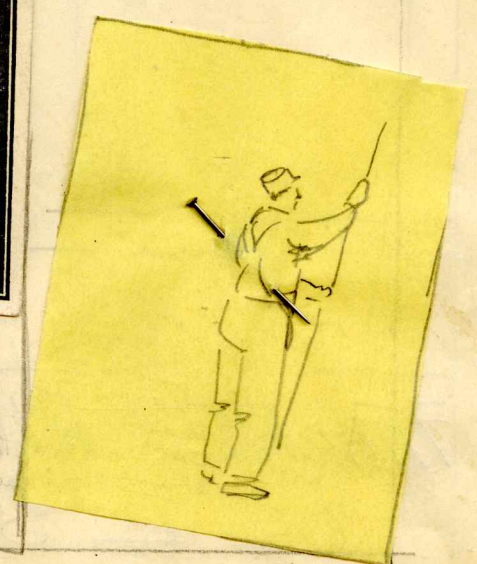
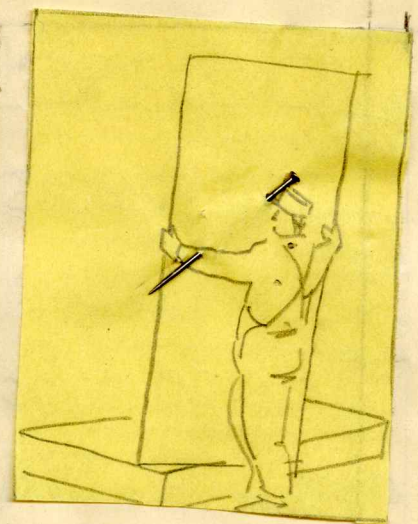


61 lines
 14 Pt
 3 1/2

2 Picas
 2 mts 10 Pt.
 REF
 DEC
 1487
 3 1/2



24 Picas



61 mts - 10 Pt Adm.
 1487 157 45
 3 1/2 300

Doo's
Timbers
Box Beams
Mouldings
and Trim

The RED RIVER LUMBER CO.

MILL, FACTORIES and GENERAL SALES WESTWOOD CALIFORNIA

102 E. SLAUSEN AVE, LOS ANGELES







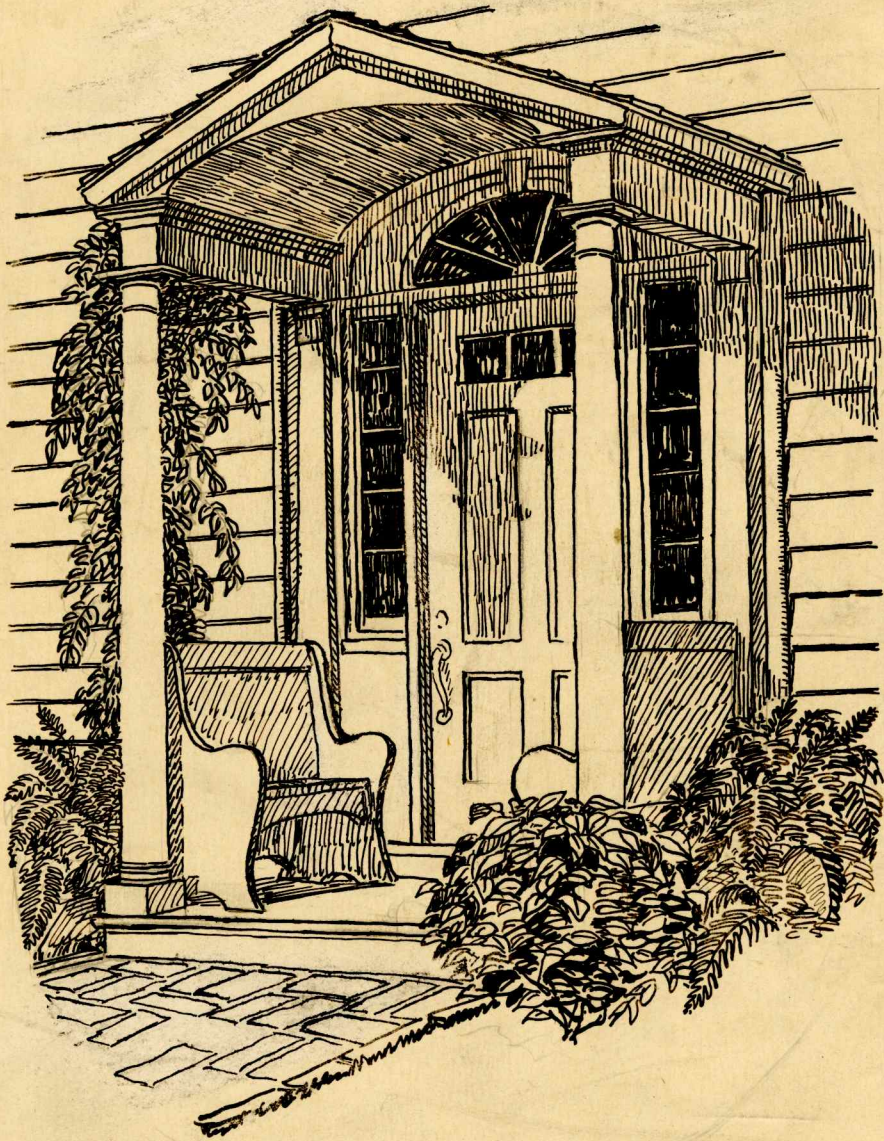
JUMBO CARD IN NATURAL COLOR

J-110. Redwoods. These huge Sequoia grow nowhere else on the earth but in a narrow strip, scarcely 35 miles wide, and 500 miles long, close to the California and Southern Oregon shoreline.

Snappy's SCENIC PORTRAITS OF THE WEST

3¢
U. S.
POSTAGE





111

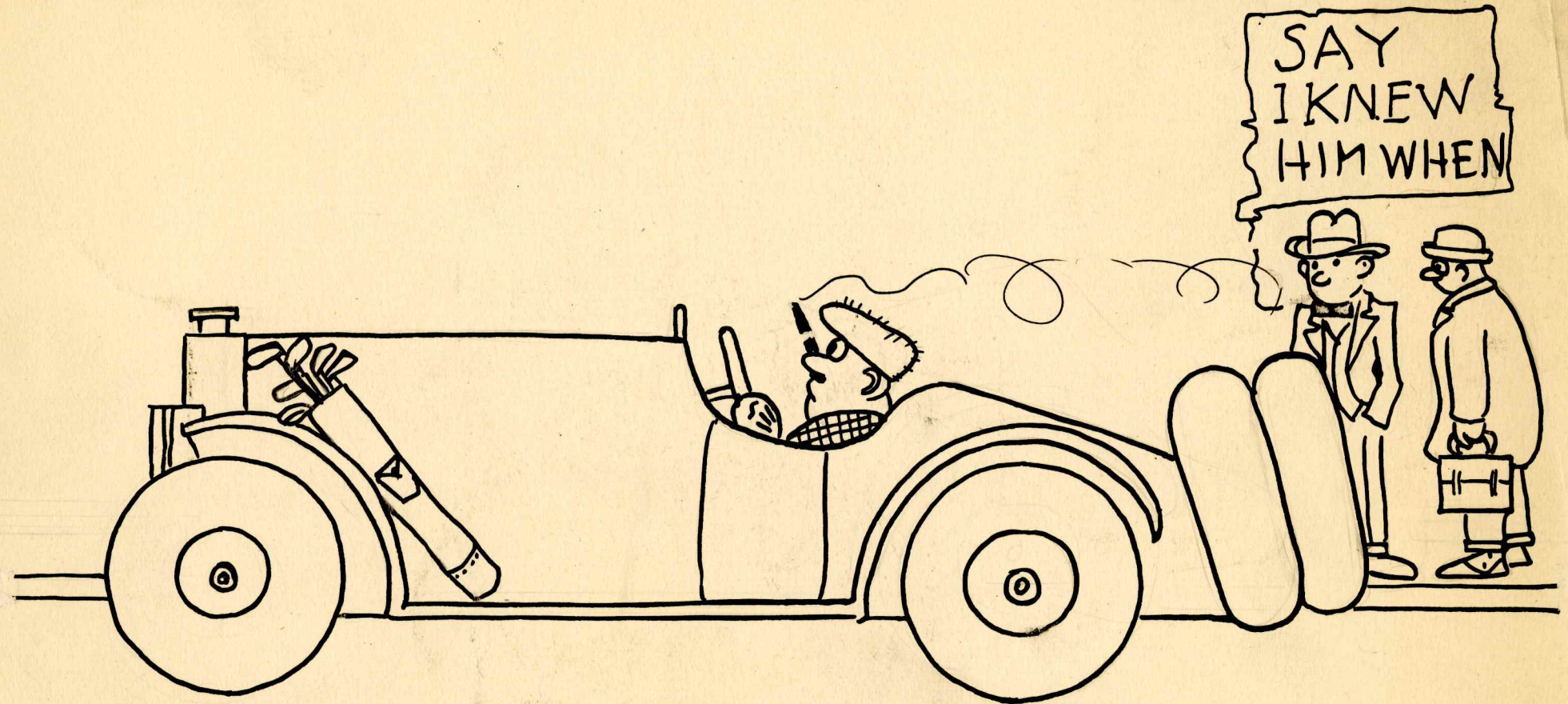
11

3

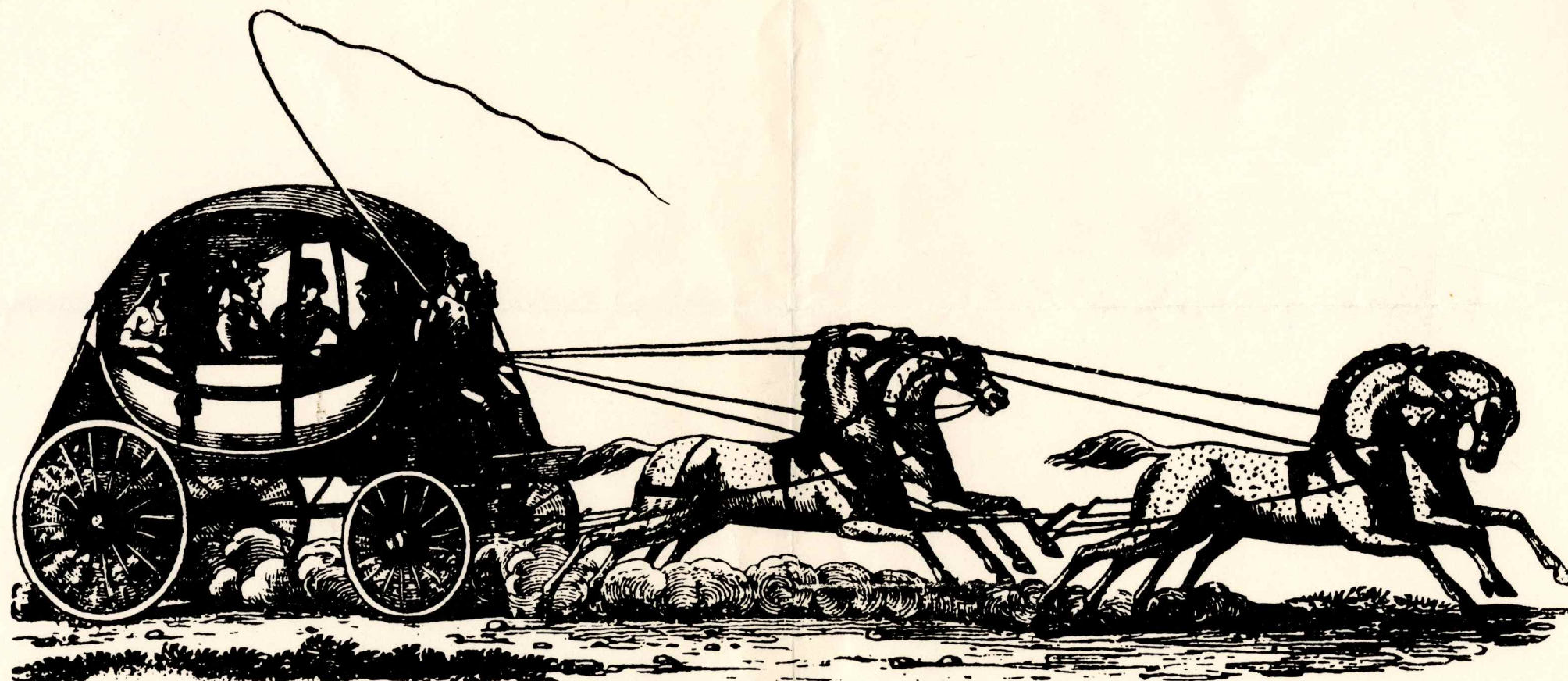
1

1

No 2. Aug 9



6" Etching
2 Electro



THE subscriber respectfully informs his friends and the public, that he has again opened a
HOUSE OF PUBLIC ENTERTAINMENT,
in the town of Xenia , at the sign of the
COACH AND FOUR.

His House is large and commodious, and his Stables equal to any in the State. His table will be supplied with the best that the country affords, and every attention will be paid to those who may favor him with a call.

During the summer season travellers who are desirous to make excursions in the surrounding country, can be accommodated with

SADDLE HORSES OR HACKS,
on the most reasonable terms.

He tenders his grateful acknowledgements to the public for former favors, and from his long experience as an Inn keeper, he looks confidently for a continuance of them.

JANUARY 1, 1831

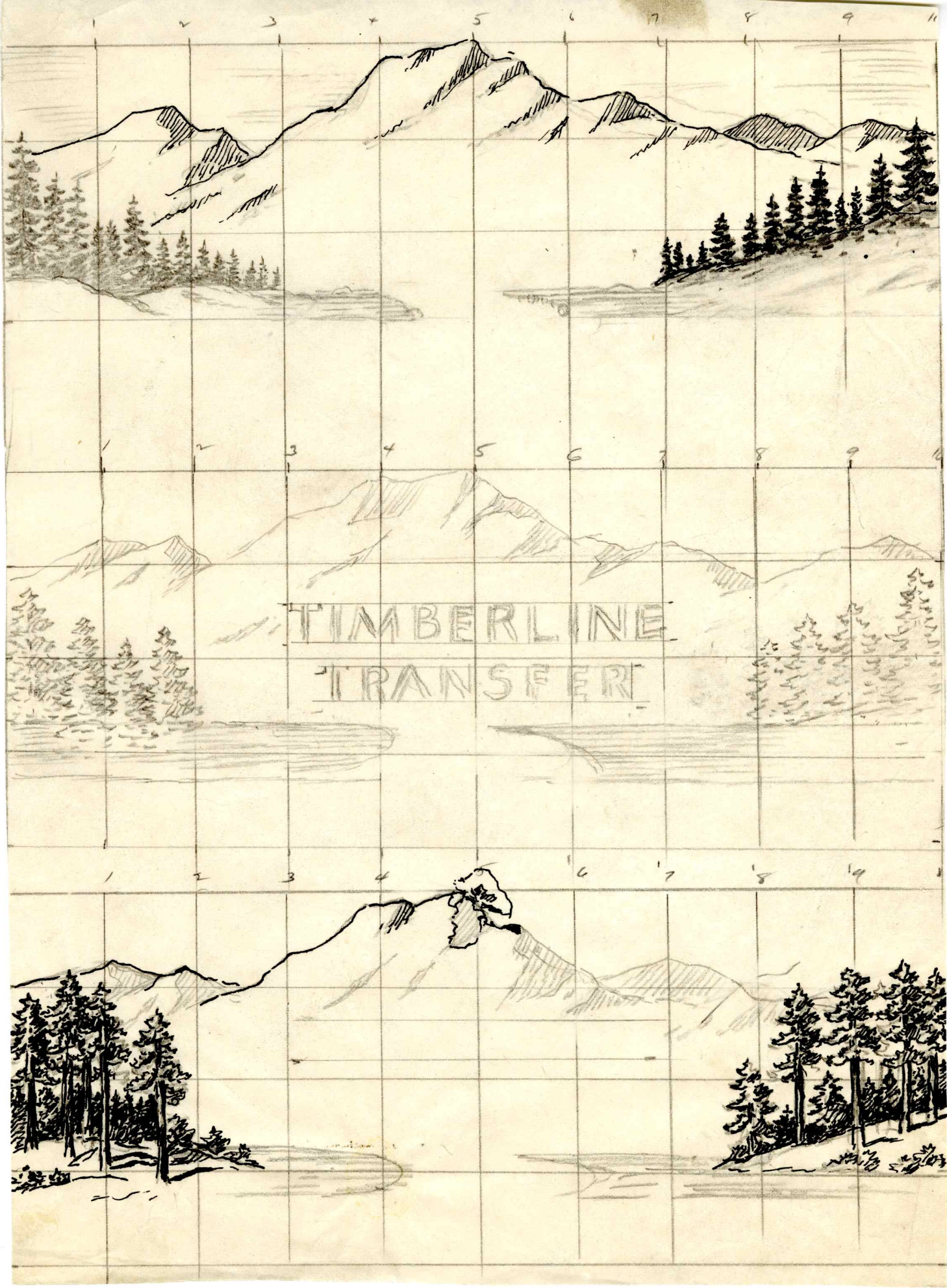
JOHN DODD



TIMBERLINE

TRANSFER

SUSANVILLE
CALIFORNIA



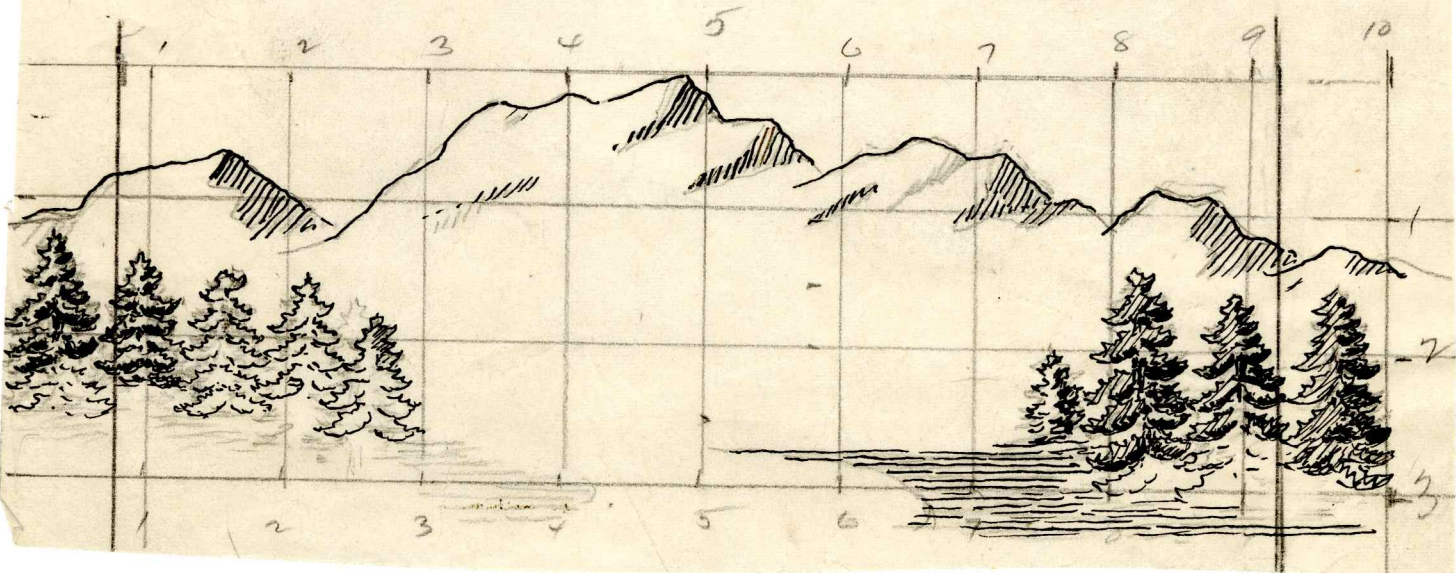
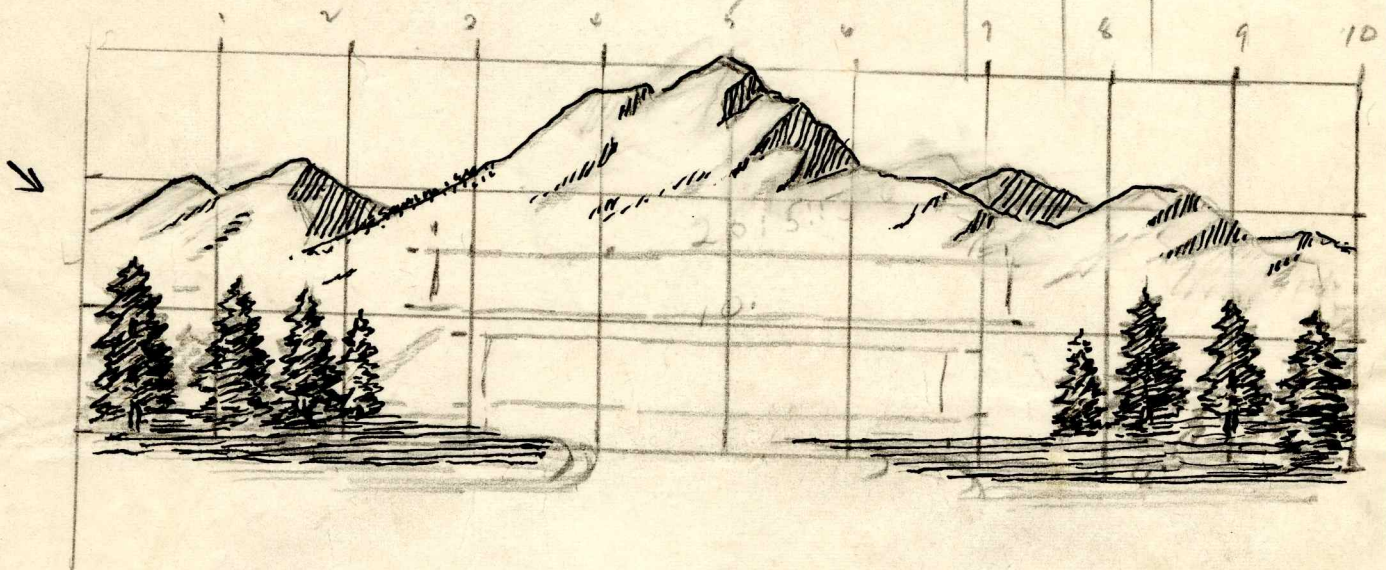
TIMBERLINE
TRANSFER

TELEPHONE
NUMBER

TIMBERLINE TRANSFER

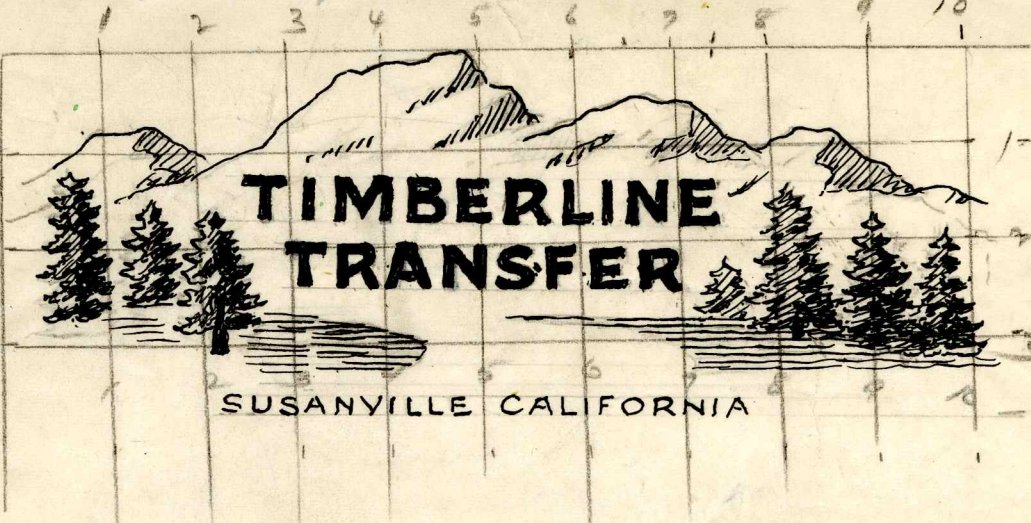
STREET
ADDRESS

SUSANVILLE CALIFORNIA



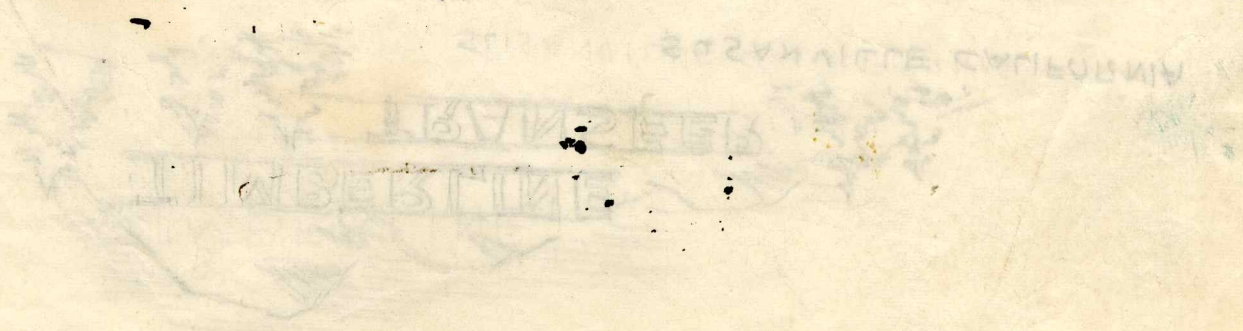
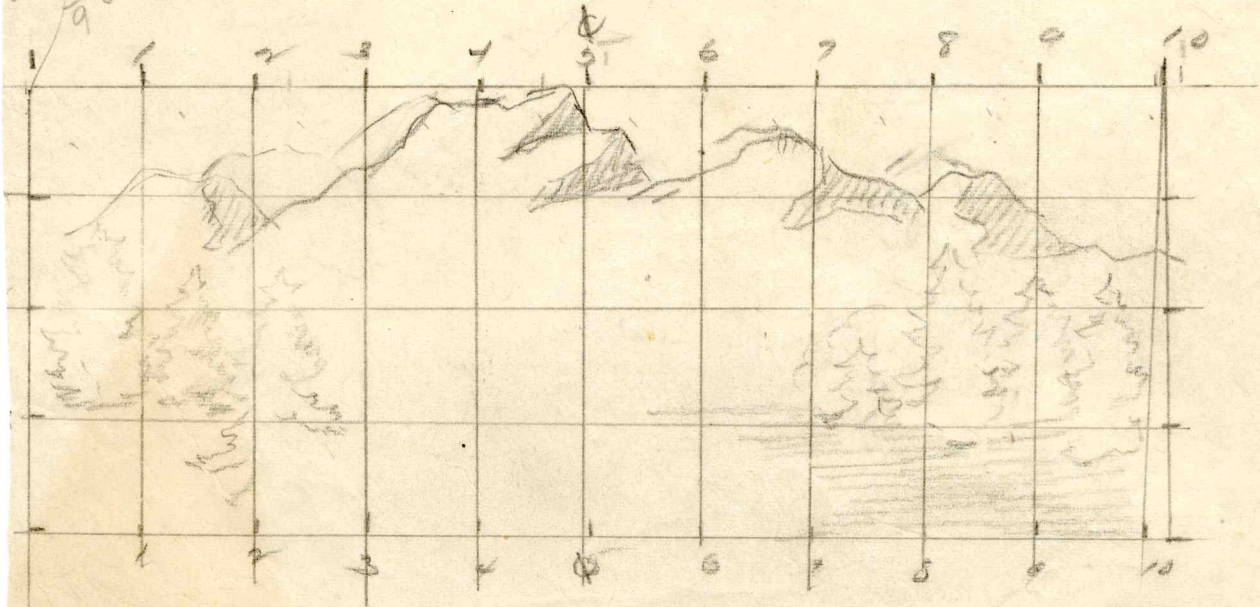
TELEPHONE
NUMBER

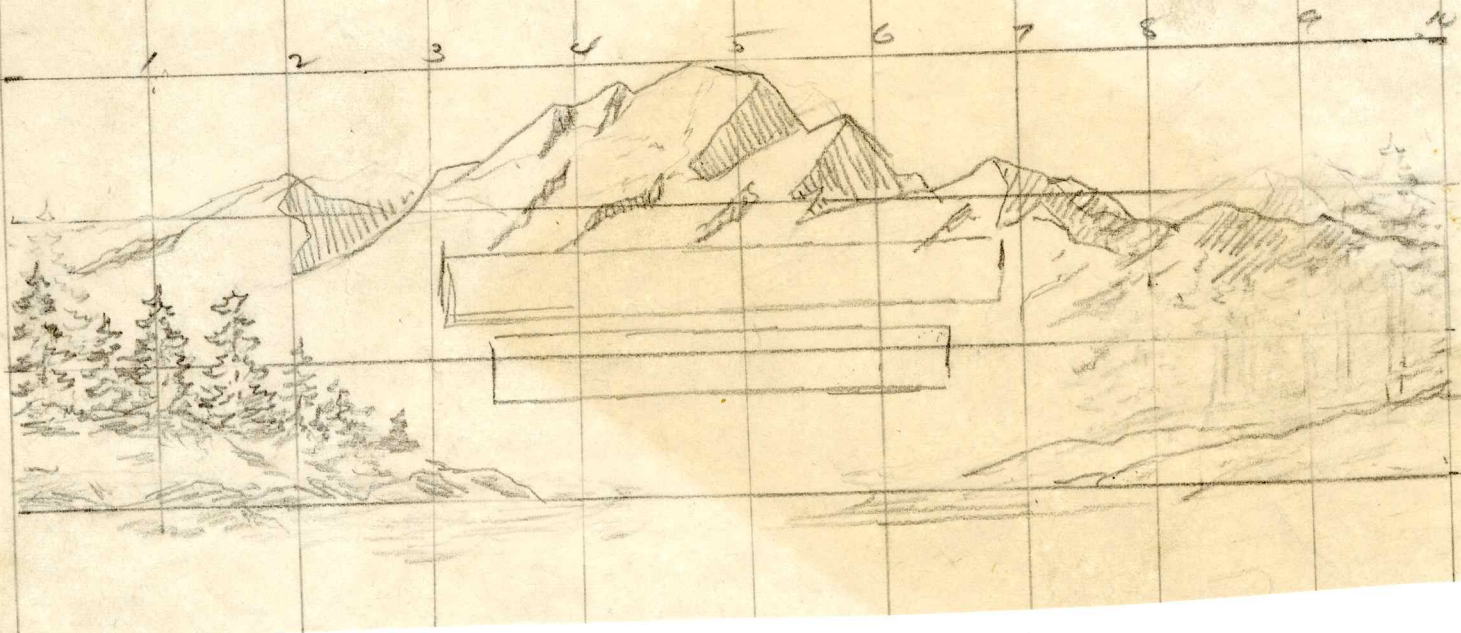
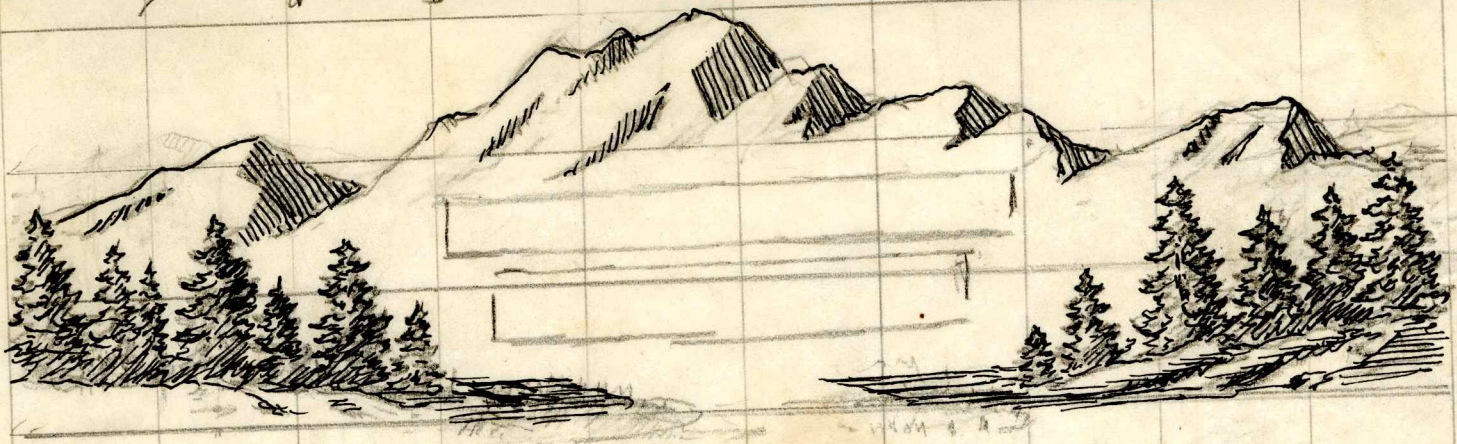
STREET
ADDRESS

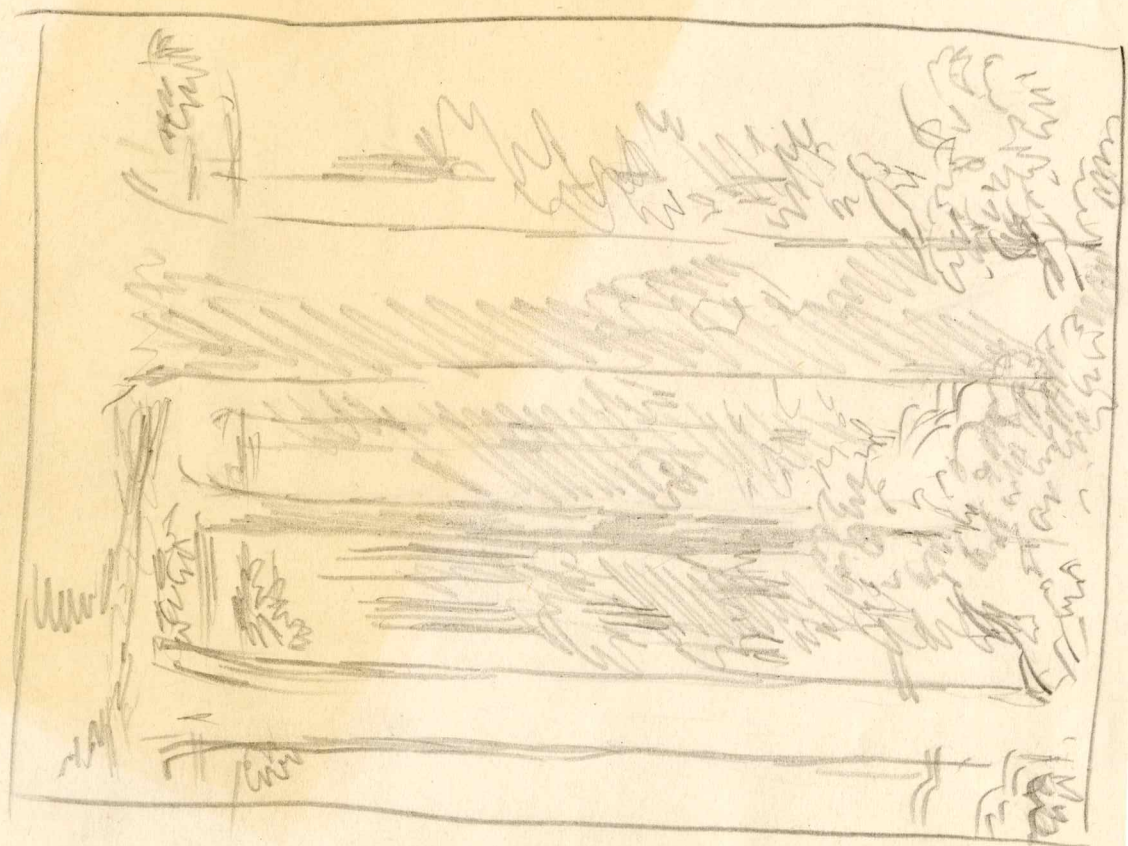
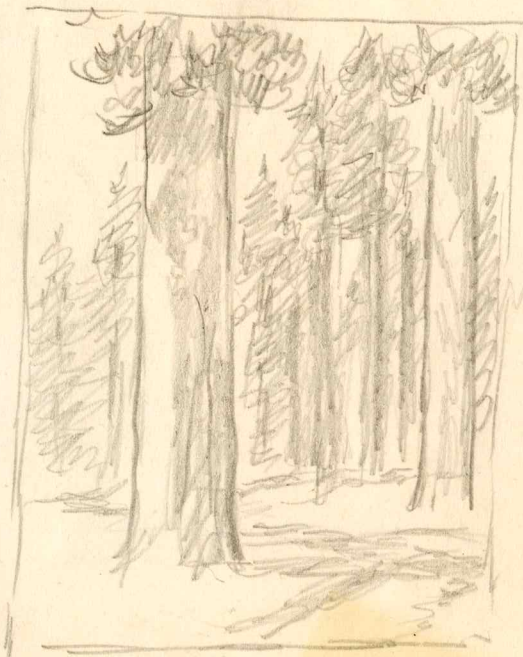


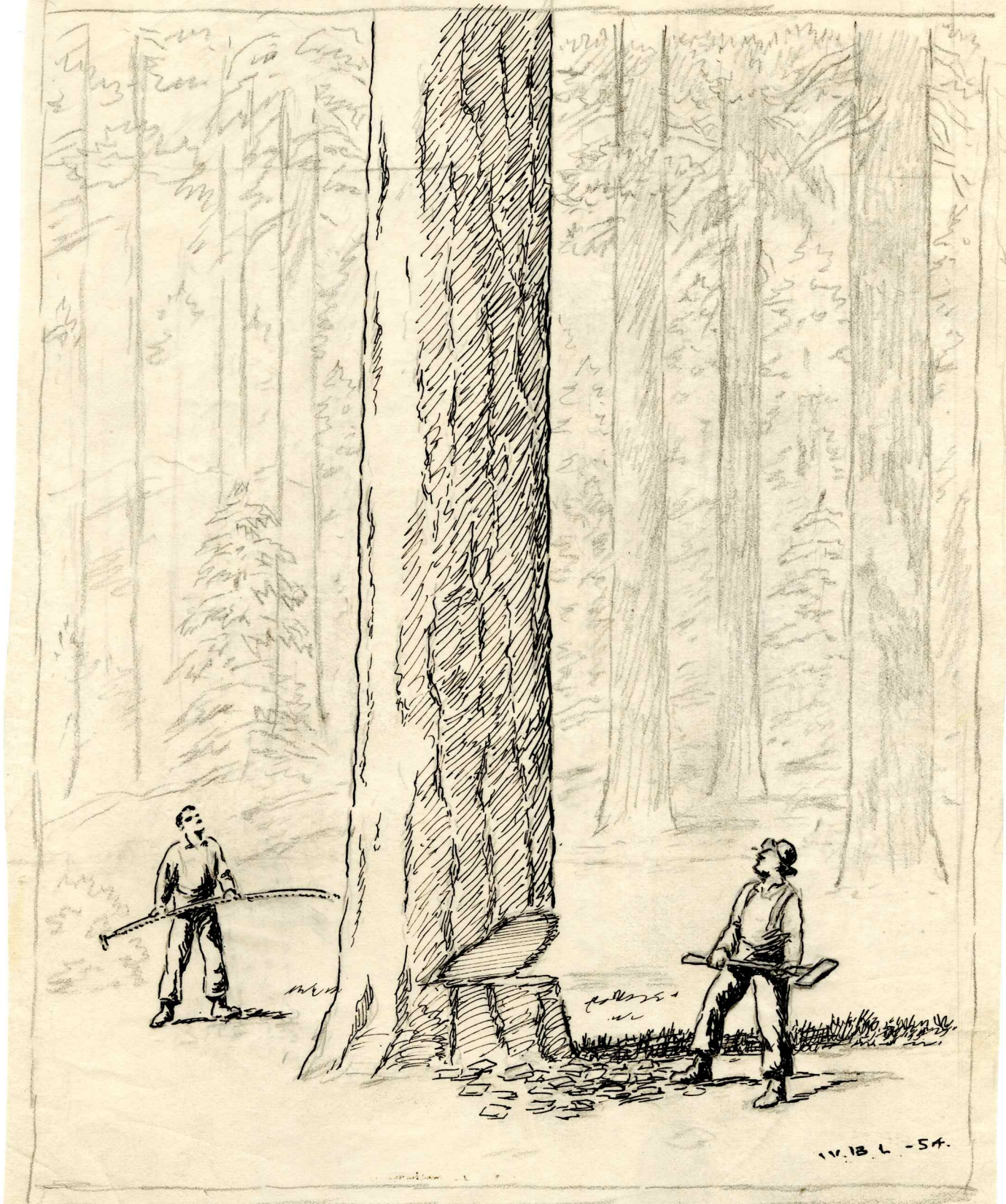
SUSANVILLE CALIFORNIA

151855
9

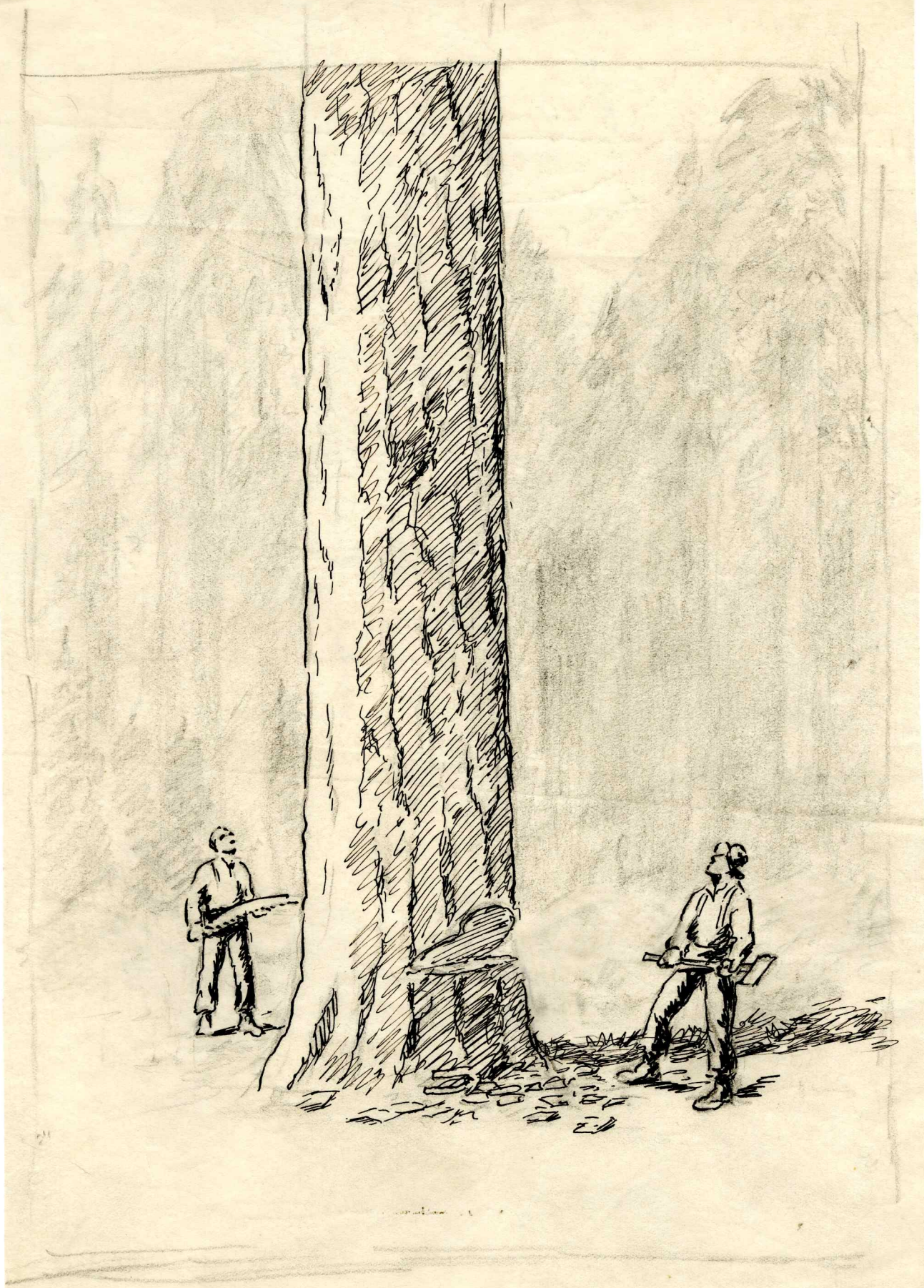


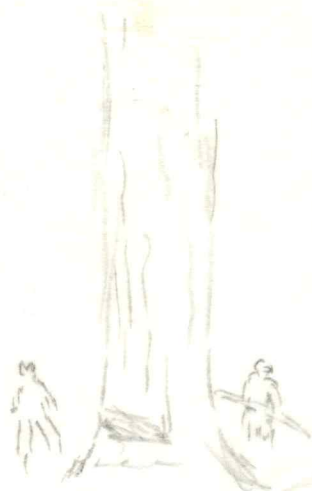






THE
RED RIVER
LUMBER
COMPANY





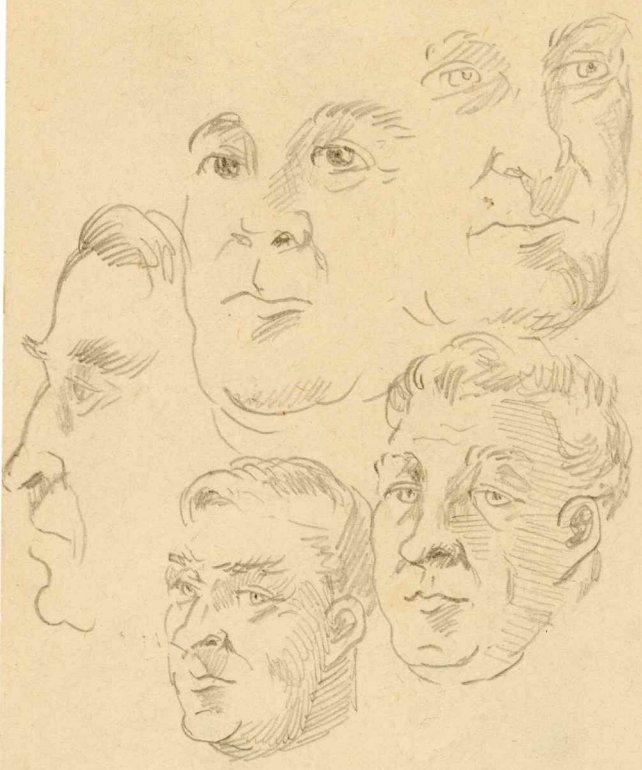


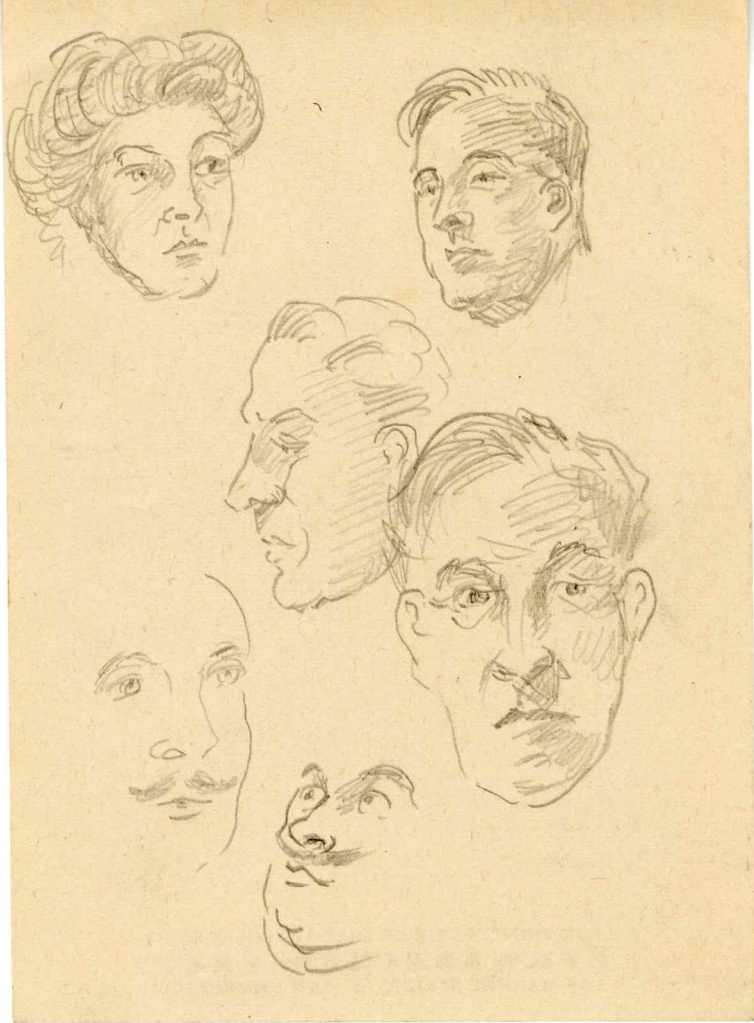
2-31





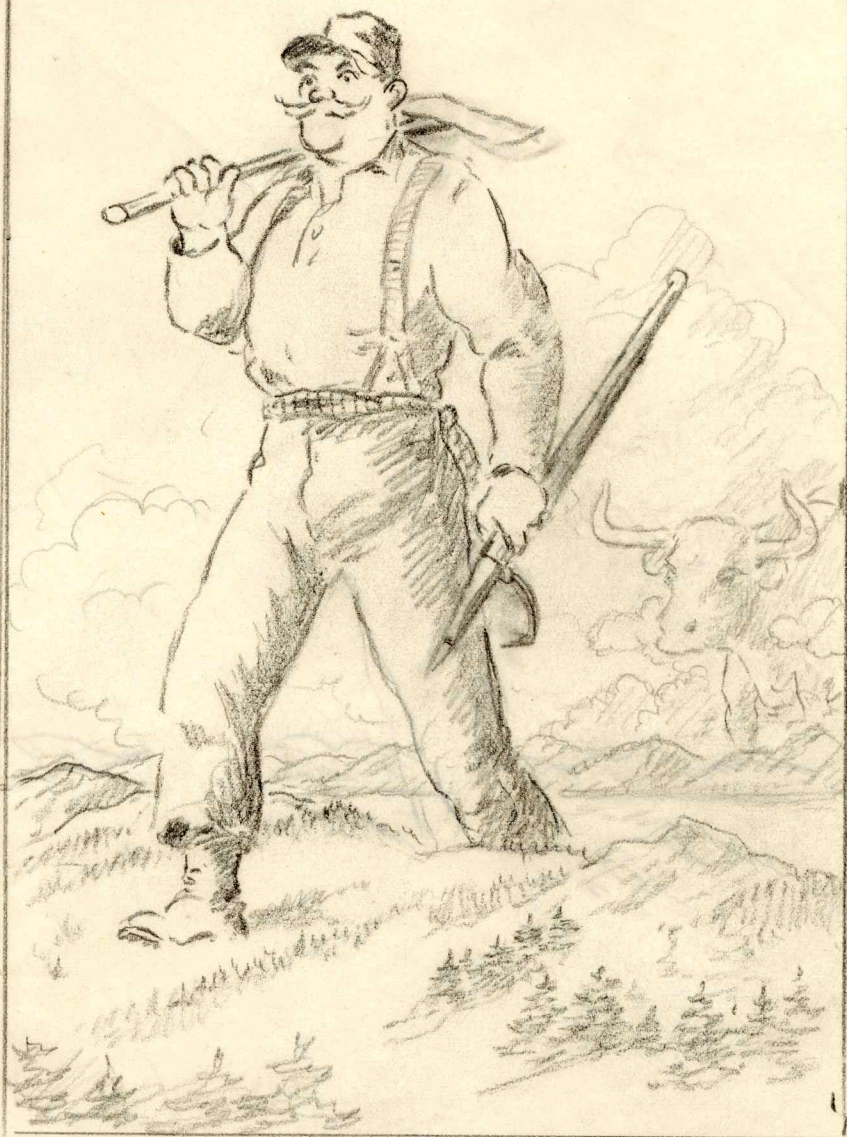
FOR PRINTING HELPS DIAL DOUGLAS 4848
SCHWABACHER-FREY
735 MARKET STREET * SAN FRANCISCO

















W.B.L. Aug-99

~~S. J. Head~~



W. B. LAUGHEAD
after
Lithography.