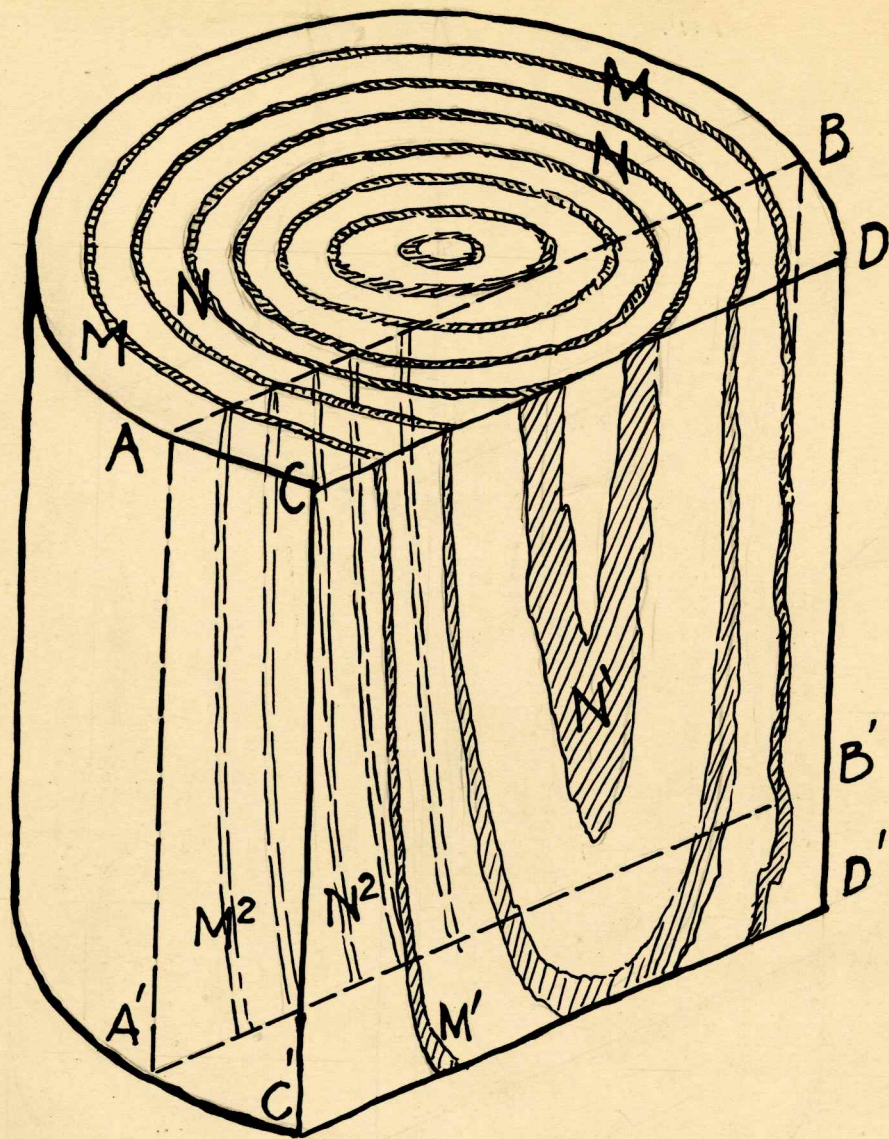


← To 2" →

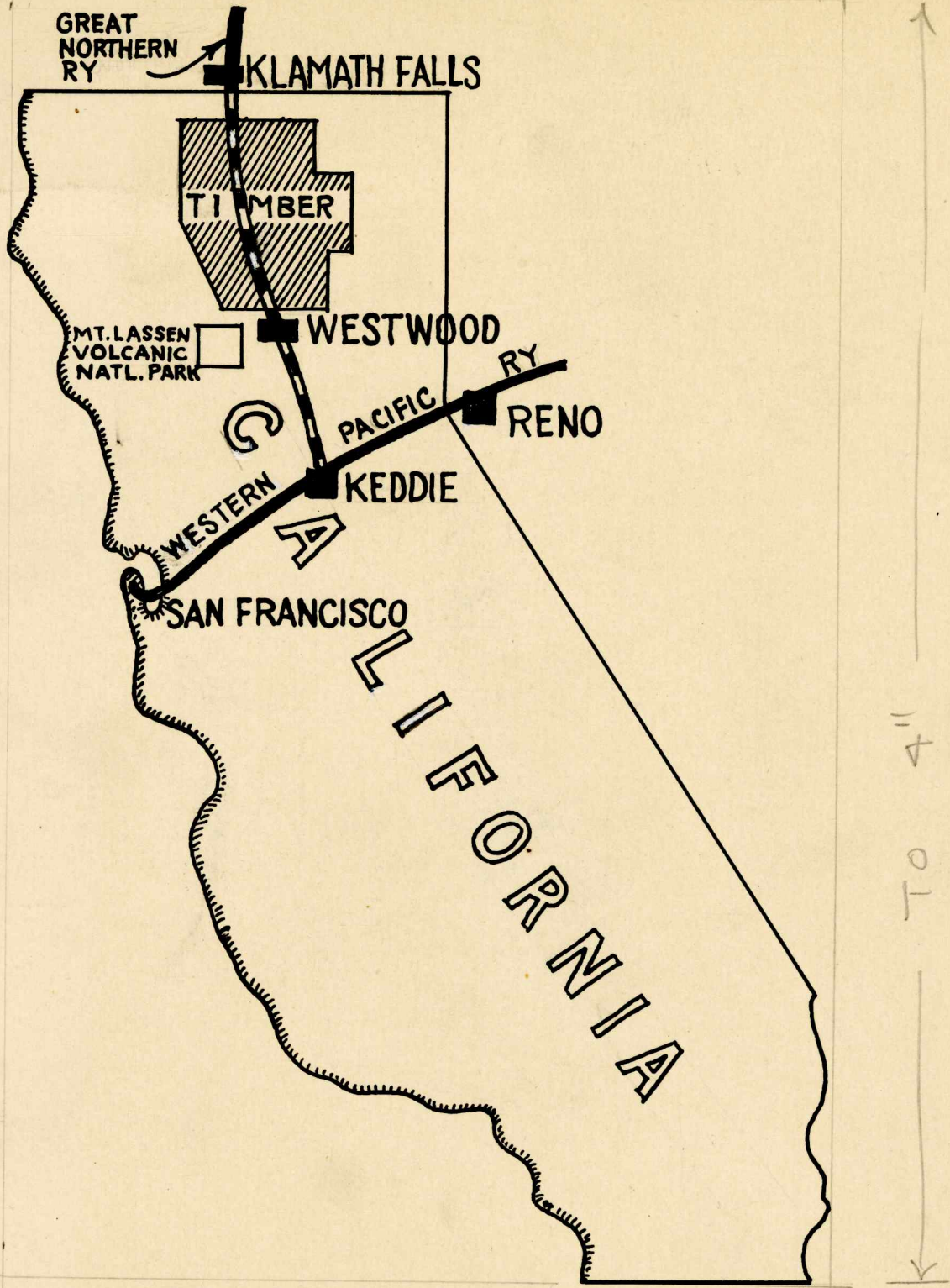
HORIZONTAL.

ONE ETCHING - NO ELECTRODES.



← TO 2" →

ONE ETCHING — NO ELECTROS.



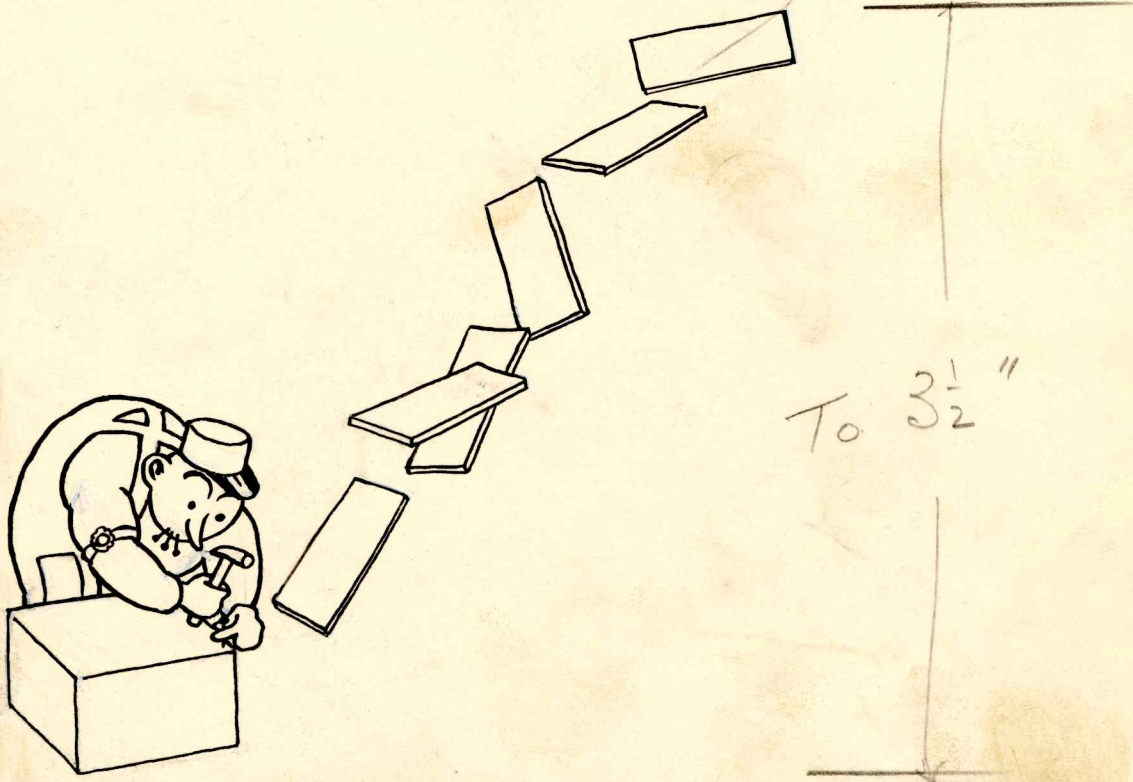
FROM
THE RED RIVER LBR. CO.
WESTWOOD, CAL:

9/27/30

Order # 12403-P.

1 Etching
4 Electros -

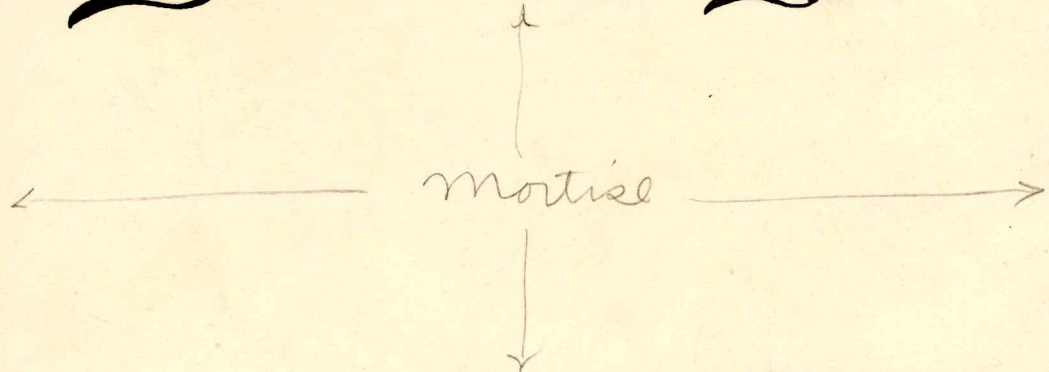
Special



10

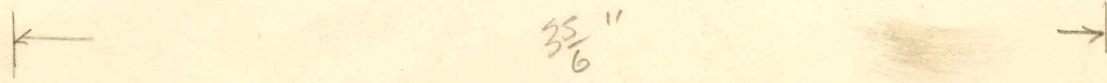


Easy to Work, Stays Put

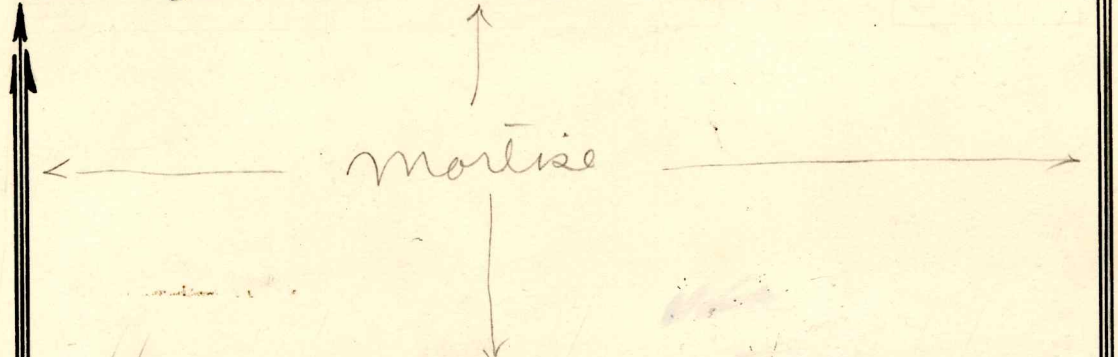


The RED RIVER LUMBER CO.

Mills & Sales	Yard & Sales	Sales	Gen. Office & Sales
WESTWOOD	2452 Loomis St.	Monadnock Blk	807 Hennepin Av.
CALIFORNIA	CHICAGO	SAN FRANCISCO	MINNEAPOLIS

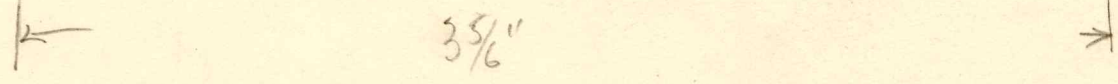


SASH & DOORS YARD & FACTORY STOCK



The RED RIVER LUMBER CO.

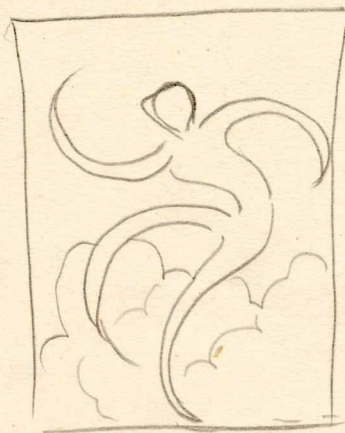
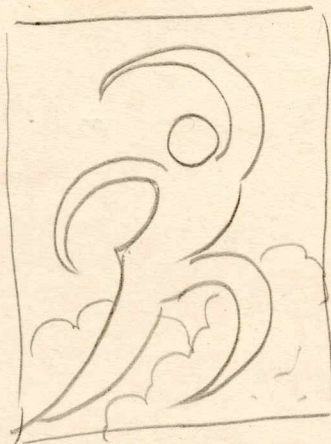
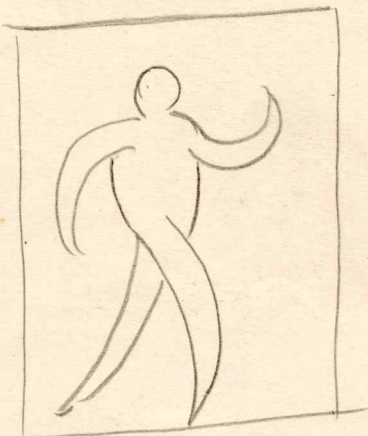
Mills & Sales	Yard & Sales	Sales	Gen Office & Sales
WESTWOOD	2452 Loomis St	Monadnock Blk	807 Hennepin Av.
CALIFORNIA	CHICAGO	SAN FRANCISCO	MINNEAPOLIS.

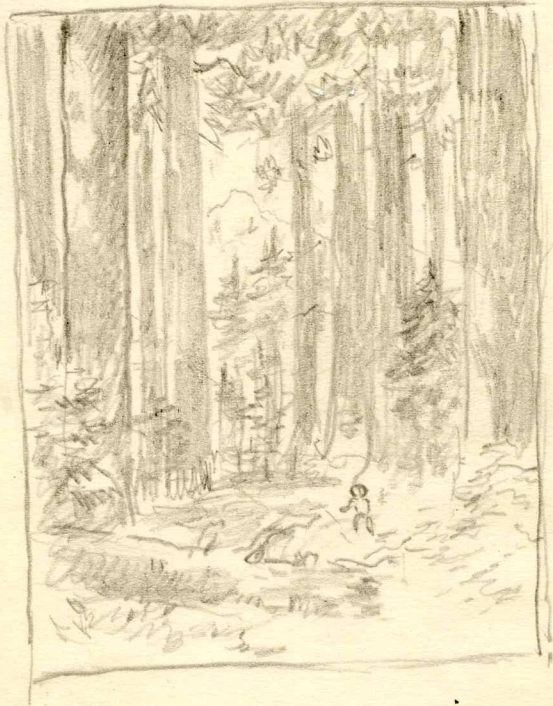


1. Etching Only - Each.

"Producers of White Pine for Half a Century"

The **RED RIVER LUMBER CO.**
MINNEAPOLIS and WESTWOOD

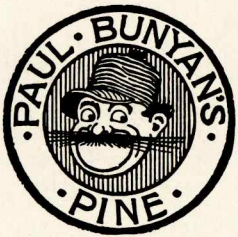






SUGAR PINE AND

CALIFORNIA WHITE PINE





THE HUNTERS.

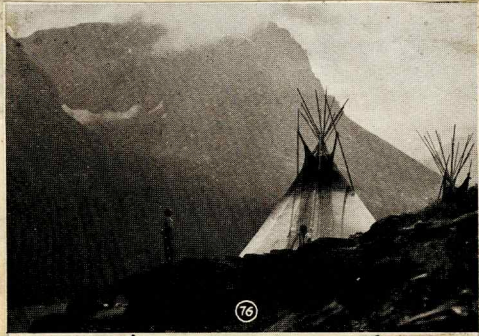
© REE

A Chapter from
"Visitin' Round"
by Caryl B. Storrs
And other Information about
Indian Pictures
BY
Roland W. Reed

Gold Medal San Diego Exposition.



**A Visit With
Roland W. Reed**
From "Visitin' Round in Minneota"
By Dr Caryl B. Storrs, Dramatic and
Music Editor *Minneapolis Tribune*



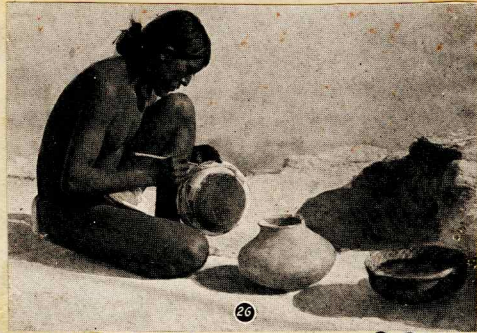
THE ECHO'S CALL © REED

R

← 15 Pieces →

P. 1-2-3-4-5-6

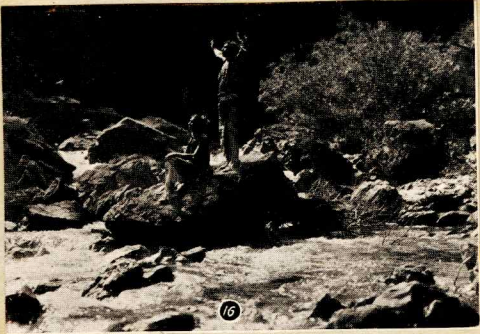
40" = 8 Preaded = 420 Notes



THE POTTERY MAKER. © REED.

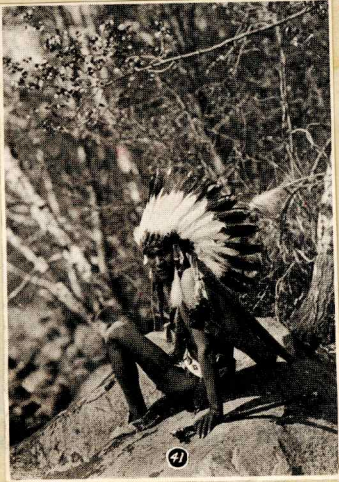


THE END OF THE CHASE © REED



PRAYER TO THE THUNDER BIRD © REED

[Blank space for notes]



"RINGING BELLS"
OJIBWAY

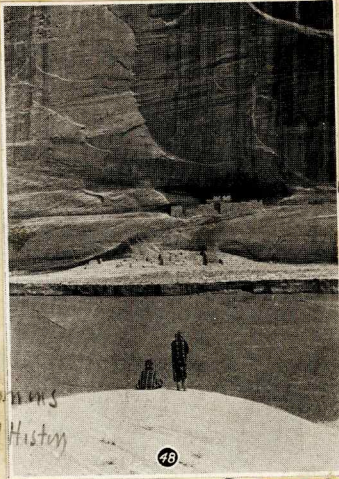
(X)
68

R. H. ADAMS
CURATOR
T. B. WALKER
ART GALLERY
MINNEAPOLIS

"ALONE WITH
THE PAST"
NAVAJO

(B)

68 made
6 pr.



S. Chapman Seaman
curator
Field Museum Nat'l History
CHICAGO

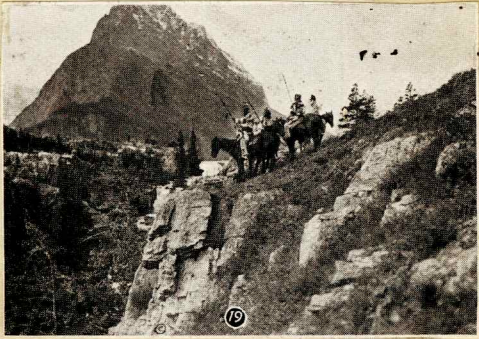
© REED

[Blank space for notes]

TRIBUTE TO THE DEAD © REED



(B)



19

"MOOSE
CALL"
OJIBWAY

67

(D)

EUGENE J. BRUCE
U.S. Forest
Service
Washington
D.C.



20

THE MOOSE CALL © REED



8

"EVERY-
WIND"
OJIBWAY

(C)

64

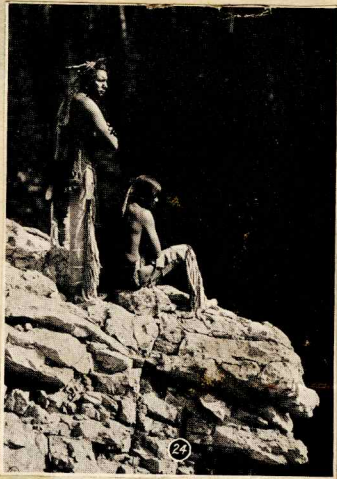
MAURICE
J. FLAGG
STATE ART
COMMISSIONER
MINNESOTA



27

5

6



"SONG OF
THE CANYON"
PIEGAN

(F)

SUNSET
MAGAZINE
JUNE-1915

Faint, illegible text, possibly bleed-through from the reverse side of the page.

100%

1" High - 1 ZINC - 14 Electros

3/4" High 1 ZINC - 14 Electros

36 Point 1 ZINC 20 Logotypes

1/2" 24 Point 1 ZINC 40 Logotypes

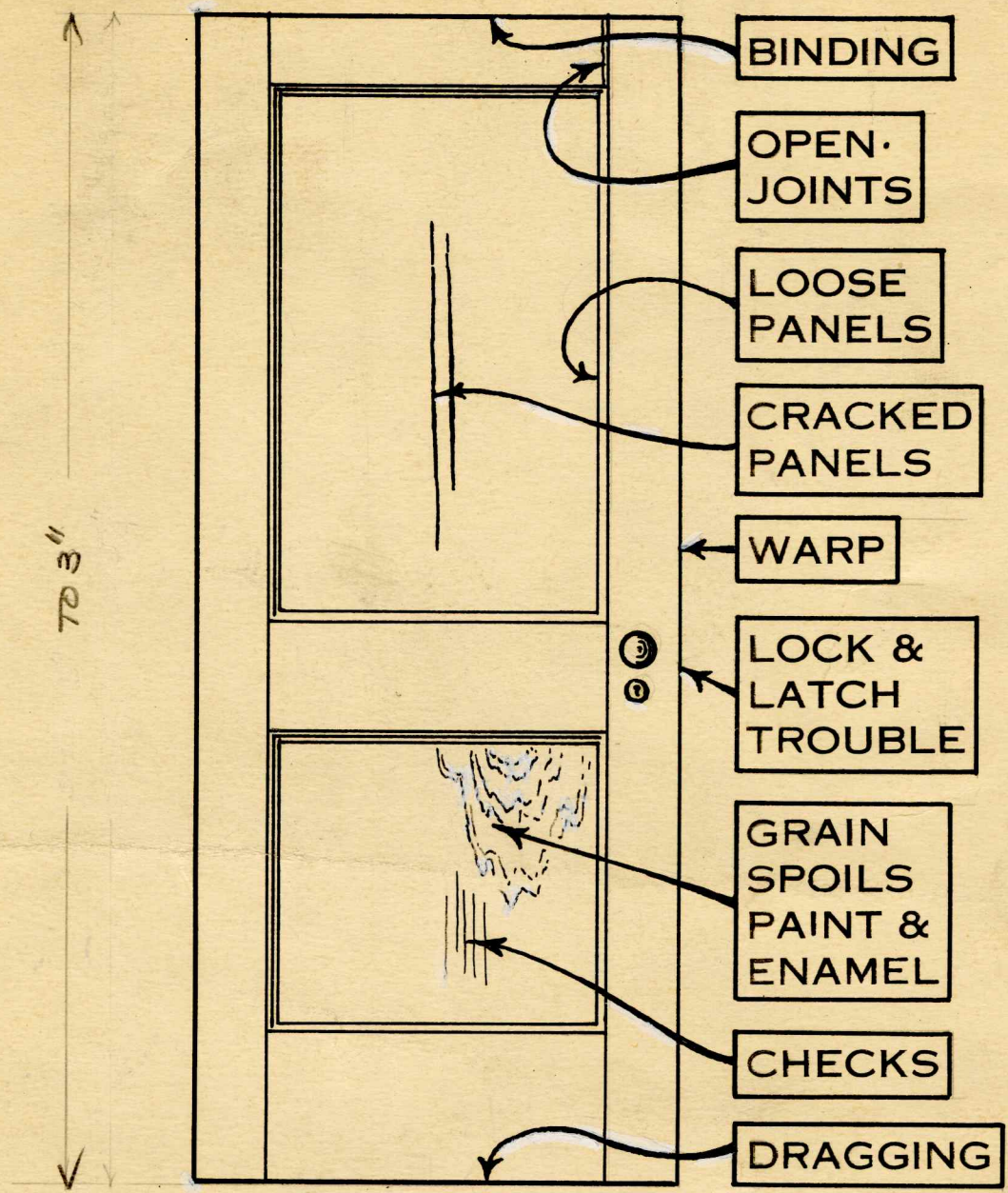
7/8" 14 Point 1 ZINC 40 Logotypes.

2-2-31

THE RED RIVER LUMBER CO.
Westwood, California

ORDER NO-1302-P





Drawing "Door Troubles"

WESTWOOD, CALIF.
 THE RED RIVER LBR. CO.
 FROM
 Order # 3497-P.
 3-30-31.
 1 zinc -
 4 electros -

To
 Printing Plates Co
 306-12th - Oakland

QUALITY-ECONOMY

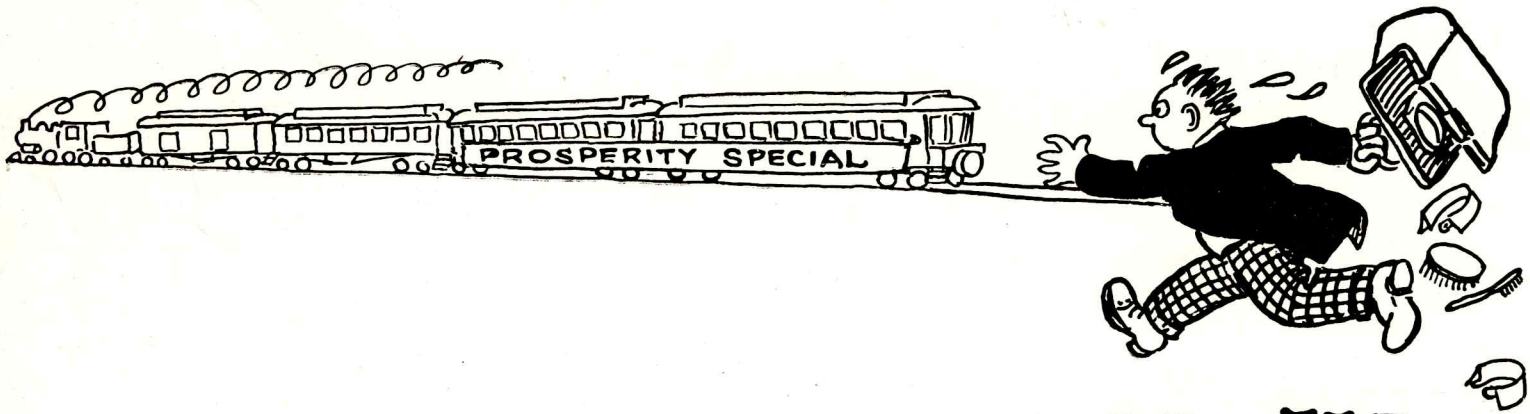
No 27-Z

1 Etching $7\frac{1}{8}$ " 4 Electro
1 Etching $4\frac{1}{4}$ " - 1 Electro

LIGHT WEIGHT - SAVES FREIGHT

No 28-Z

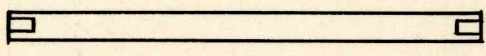
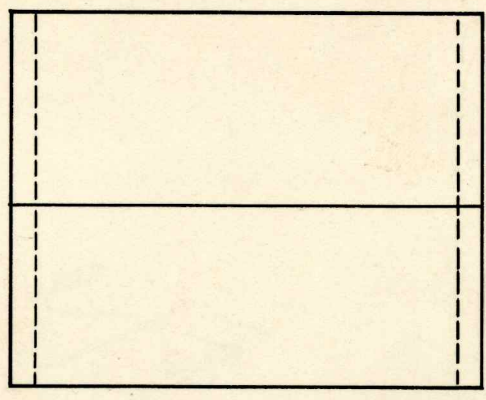
1 Etching $7\frac{1}{8}$ " 4 Electro
1 Etching $4\frac{1}{4}$ " 1 Electro



**IF YOU WAIT
TILL THE LAST
MINUTE**

12-12-30.
FROM
THE RED RIVER LBR. CO.
WESTWOOD, CAL.

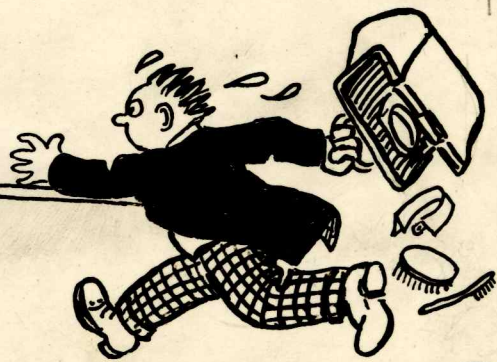
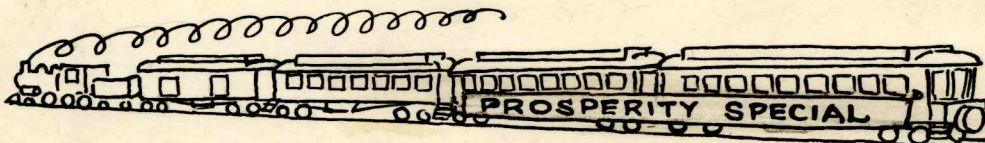
Order No - 16542-P.



ONE ETCHING SS.
4 Electrodes

ONE ETCHING 1 1/2"
4 Electrodes

7 7/8"



mortise

1- Etching

Deliver To

MISSISSIPPI VALLEY
LUMBERMAN
MINNEAPOLIS

1- Electro

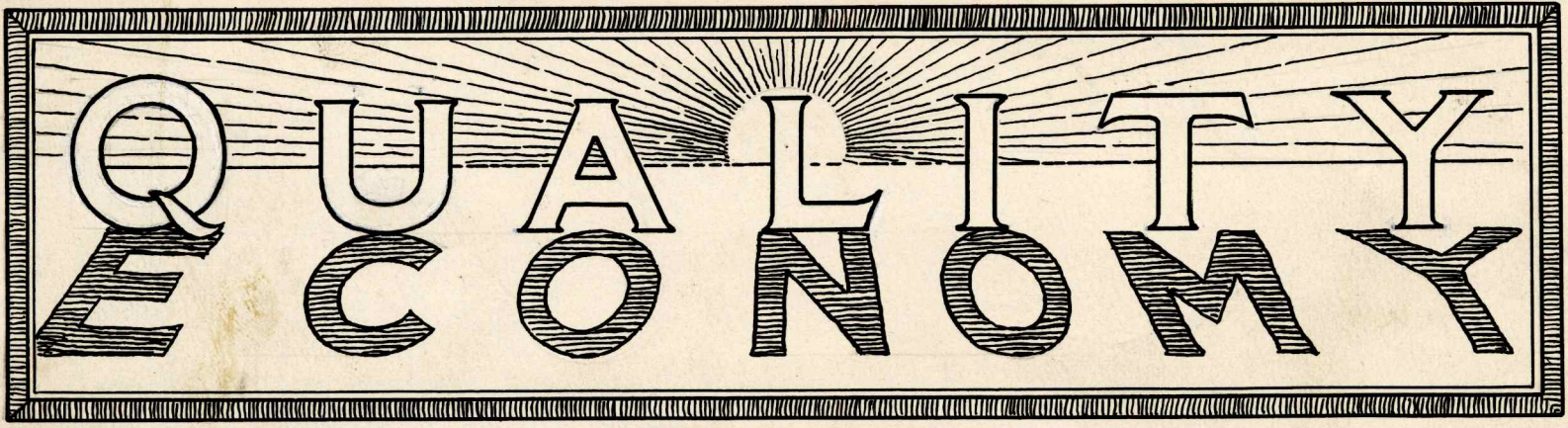
mail TO

American Lumberman
431 S. Dearborn St
CHICAGO

Invoice to 807 Hennepin - be sure to have
proof with invoice

**IF YOU WAIT
TILL THE LAST
MINUTE**

No-16-2.



1 Etch & 1 Electro 4 1/4
1 Etch & 4 Electro 7"

Block Flush all round.

Etching No. 5.

(Southern Lumberman).

"Producers of White Pine for Over Half a Century"

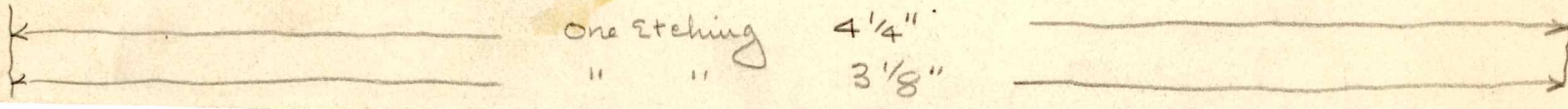
The RED RIVER LUMBER CO.

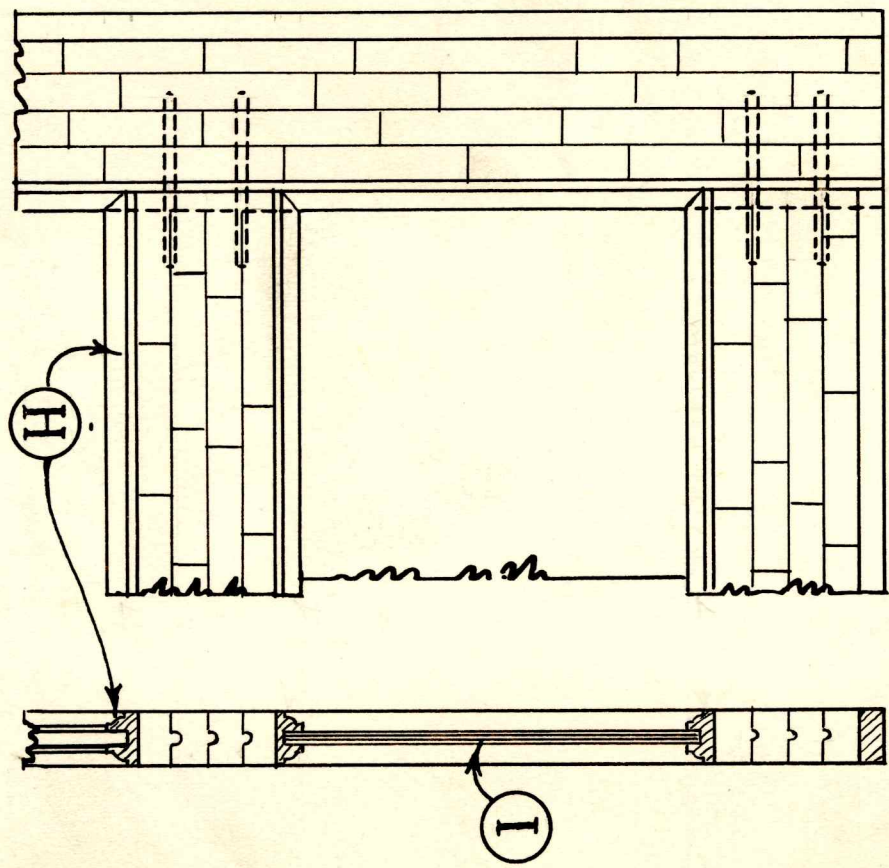
WESTWOOD
CALIFORNIA

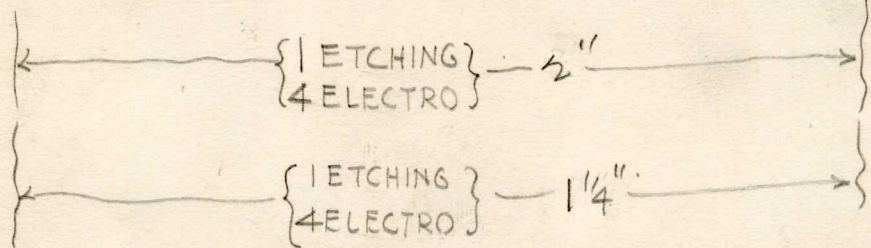
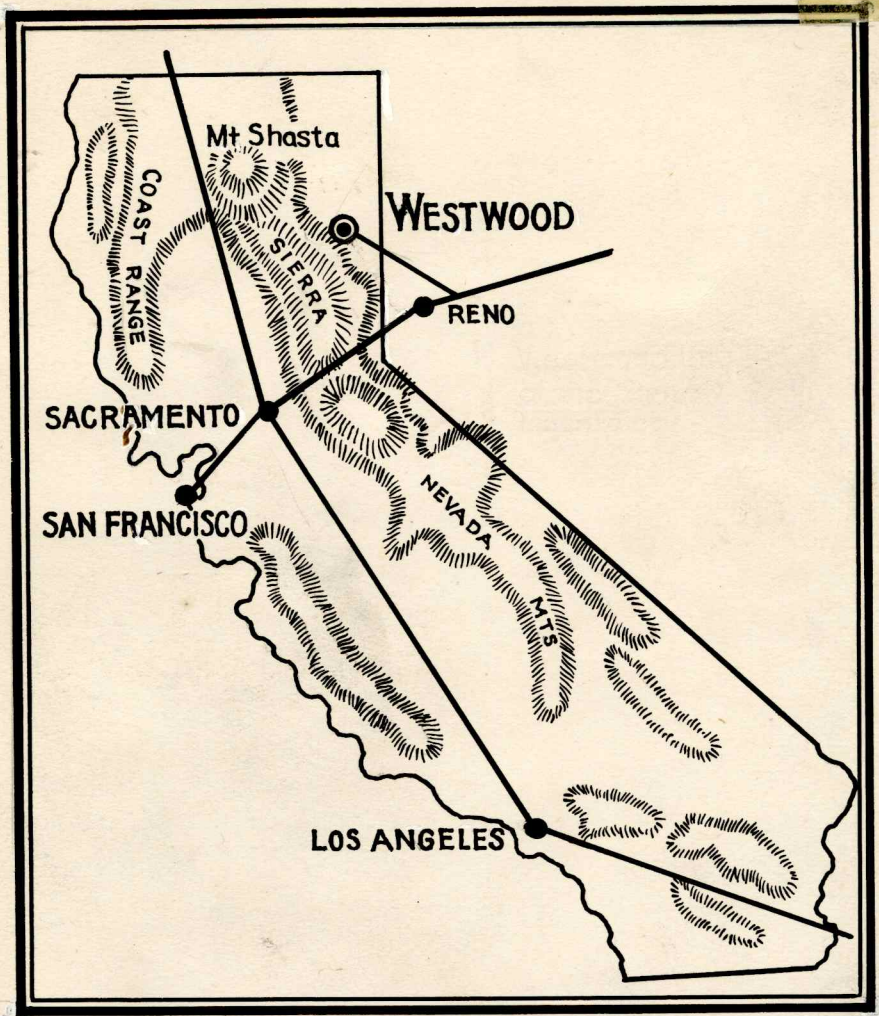
Monadnock Blk
SAN FRANCISCO

2452 Loomis St
CHICAGO

807 Hennepin Ave
MINNEAPOLIS

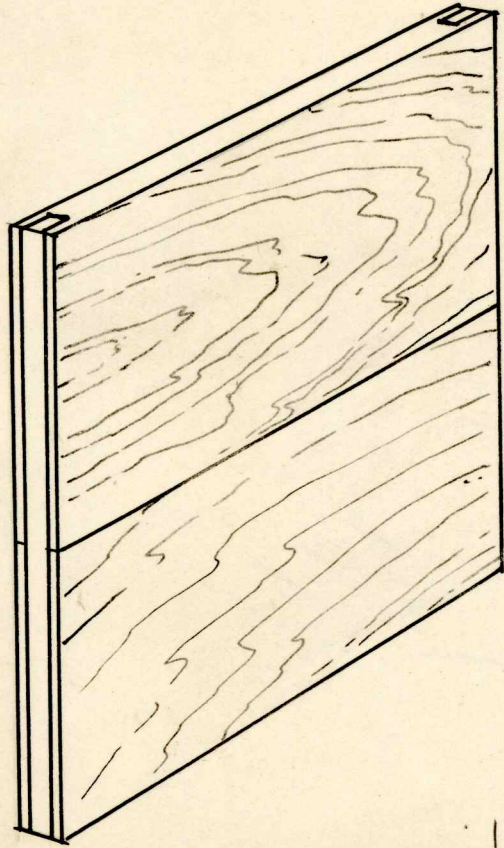






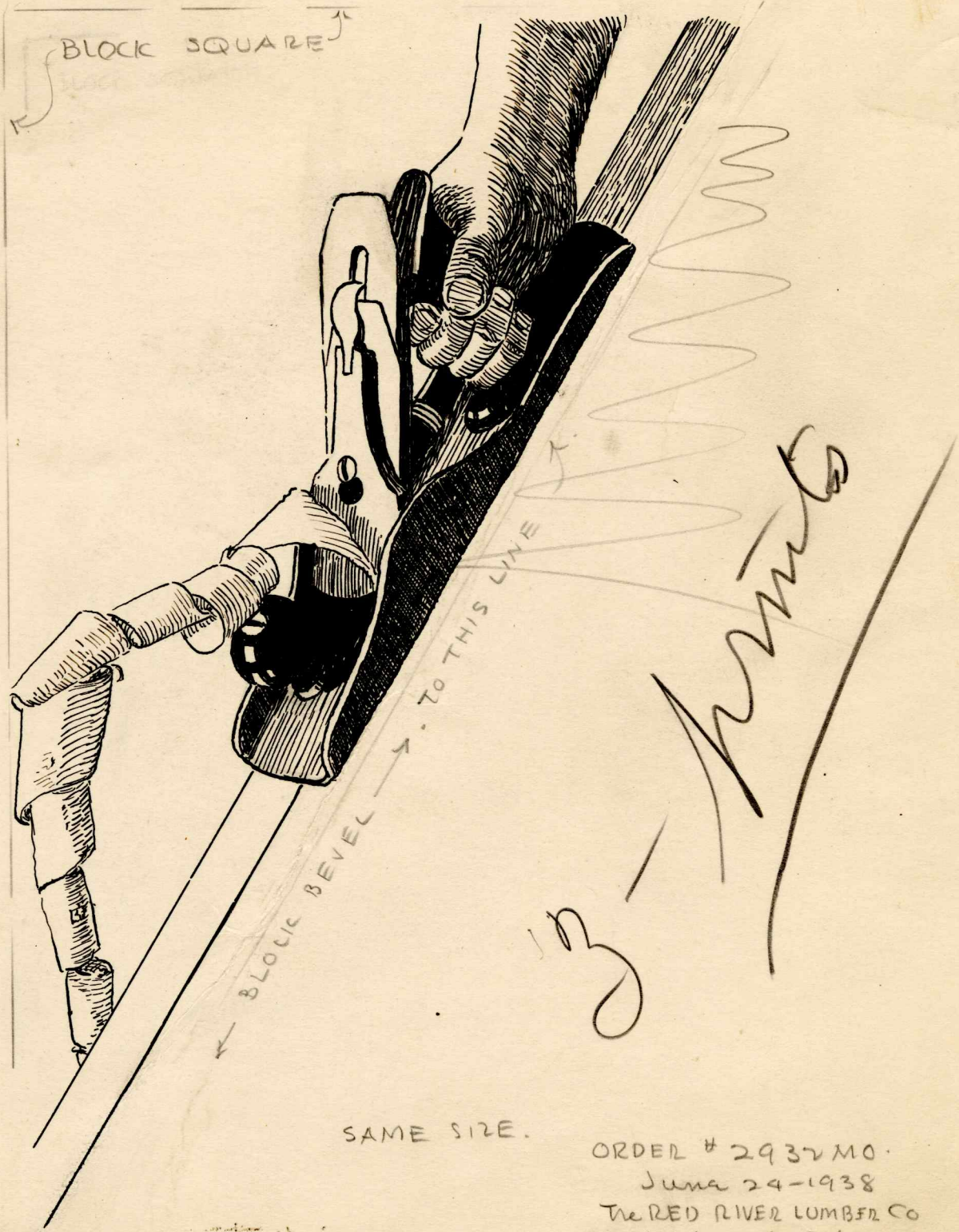
ETCHING NO. 24-Z

FROM
THE RED RIVER LBR. CO.
WESTWOOD, CAL.
12-22-30
Order # 16918



← 2" →

ONE FTCHG
4 ELECTROS.



SAME SIZE.

ORDER # 2937 MO.
June 24-1938
The RED RIVER LUMBER CO
Vestwood - Cal.

ONE ZINCO
TWO ELECTROS (BLOCKED SAME AS ZINCO)

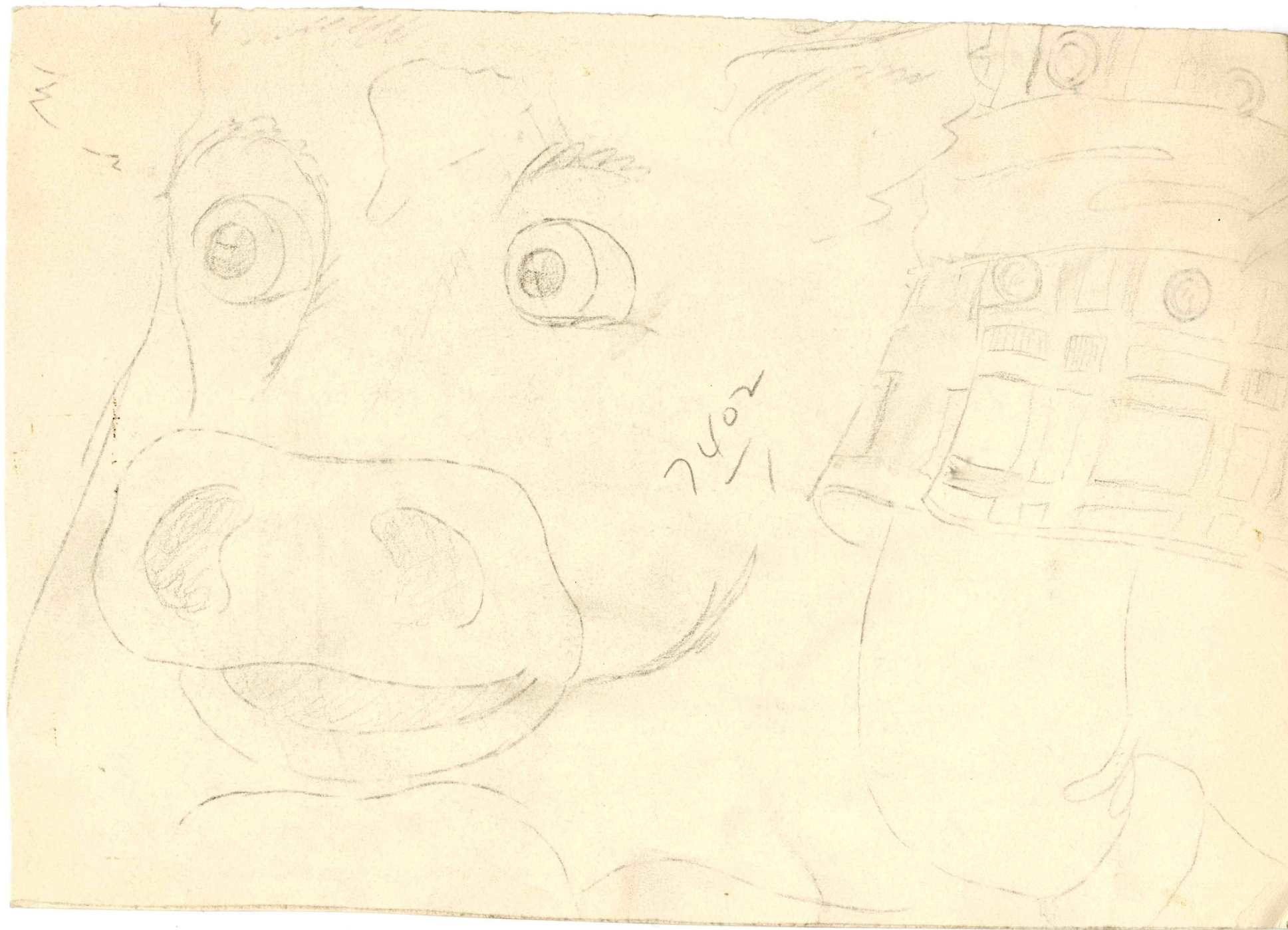
TEXAS
CATTLE BRANDS
AND
CALIFORNIA
PINE PLYWOOD

←————— 70 4" —————→

Reverse etching on all over cover plate
as per dummy—

Retouch if necessary
to make a clean
sharp plate.

The Red River Lumber Co
5272 MO -
10-12-36



1

Etching Same Size -

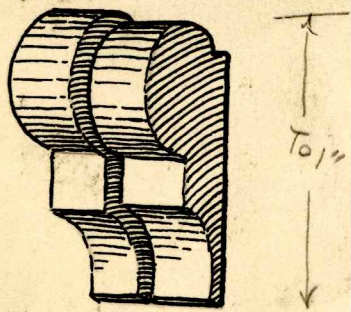
The Red River Lumber Co.

Order # 5272 MO

10-12-36



116-H



Etching- #2-33



Logs Decked for
Winter Sawing
at Westwood.

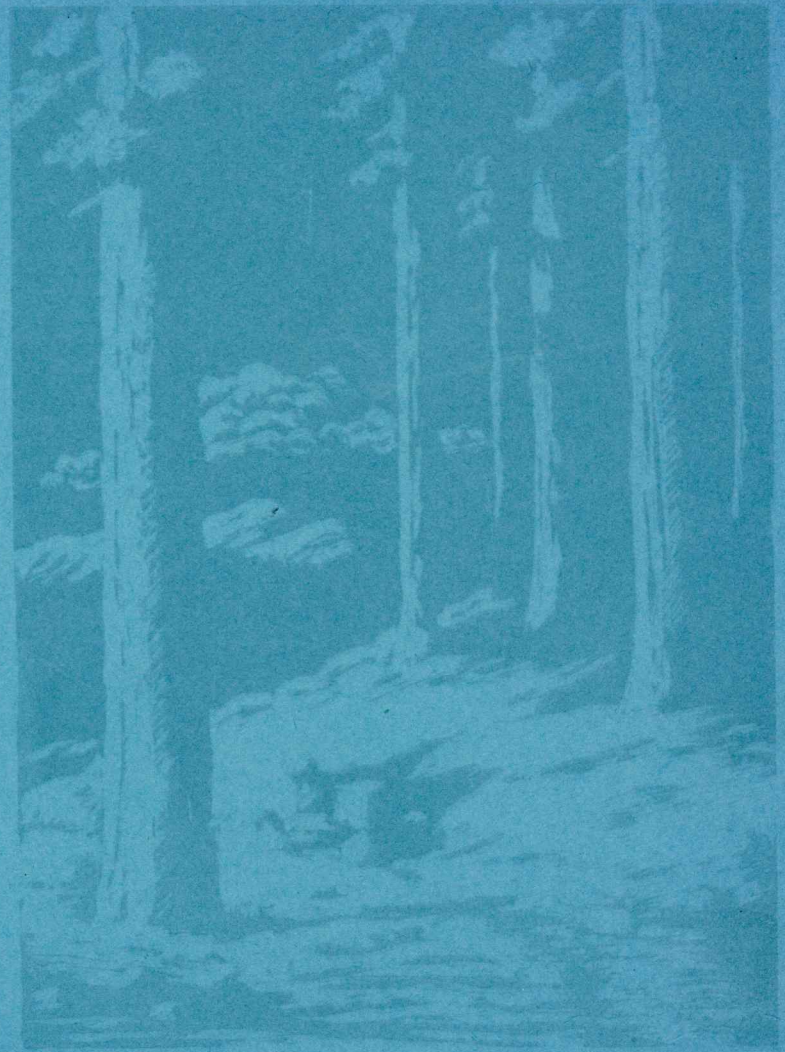
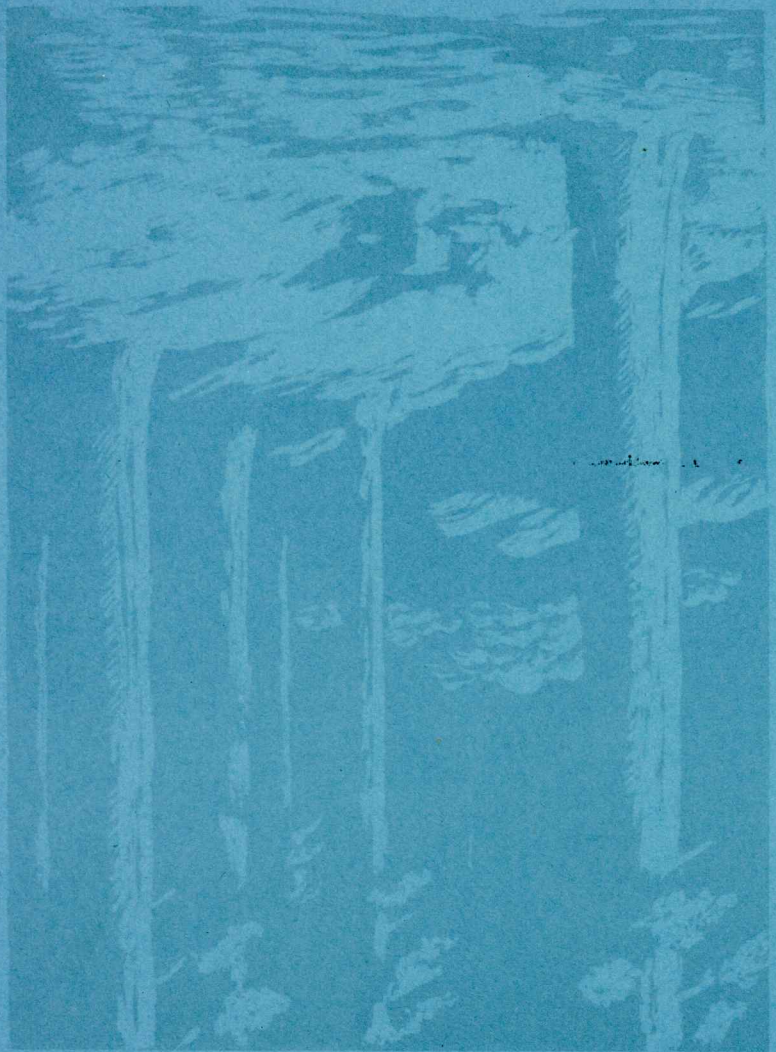
118-H

119-H



120-H









115-H

Piling Paul Bunyan's Pine
CALIFORNIA WHITE and SUGAR PINE
"Largest, lightest and softest of Pines."

FROM
THE RED RIVER LBR. CO.
WESTWOOD, CAL.

Obj. # 3378
7/2/35



————— T o 1/2 —————



R-40
80%

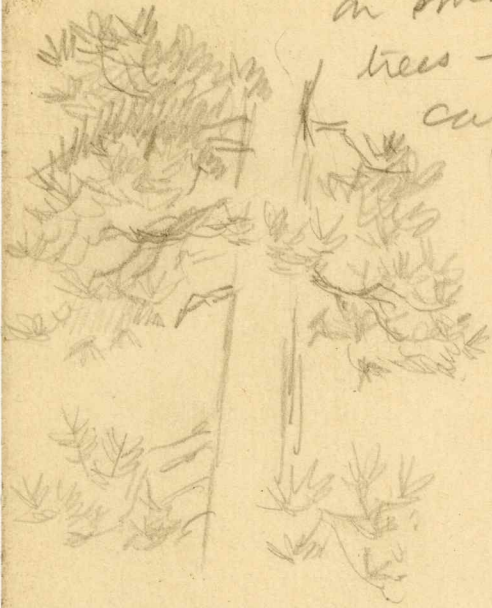


CHRISTMAS GREETINGS
AND BEST WISHES FOR
A HAPPY NEW YEAR
FROM
W. B. LAUGHEAD



THE PILGRIM

July - new
needle clusters
on small 3-needle
trees - like green
candles on
Xmas tree



Ebberts

519 - ~~5~~ Fir

Fir don't go thru
Red & White house

Elm to 6th
West on 6th

