

WEIDMANN'S  
HEIL  
von Amerika

1934



## DEDICATION

This volume is respectfully  
dedicated to

MR. GUSTAV OBERLAENDER

whose broad vision and generosity  
have inscribed a new chapter in the  
book of human relations and inter-  
national goodwill.



## APPRECIATION

The heartfelt thanks of the Oberlaender party of 1934 are extended to our gracious hosts in Germany and Czechoslovakia, to the officers and directors of the Carl Schurz Memorial Foundation and the Oberlaender Trust; to the staffs of the Philadelphia and Berlin offices of the Foundation; and to those untiring guides and friends, Dr. Franz Heske and Dr. Reinhart Trendelenburg, of the Forstliche Hochschule at Tharandt.

# WEIDMANN'S HEIL von Amerika

DURCH dieses Buch versucht die 1934er Oberländer Reisegesellschaft der Carl Schurz-Stiftung ihrer Anerkennung and ihrem tiefgefühlten Dank für die zahllosen Beweise entgegenkommender Freundlichkeit, die sie während ihres Besuches in Deutschland und in der Tschechoslowakei im August 1934 erfahren hat, einen schwachen Ausdruck zu verleihen.

Die amerikanische Holzindustrie sendet durch die Mitglieder der Oberländer Trust-Gesellschaft ihren Kollegen, Forstbesitzern and Förstern, in den deutschsprachigen Ländern Grüsse and ladet sie ein, so oft sie können nach Amerika zu kommen, unsere Gastfreundschaft in Anspruch zu nehmen and uns in unsern Forstaufgaben Beistand zu leisten.

Forstbesitzer auf beiden Seiten des Atlantik danken gemeinsam dem Oberländer Trust and Herrn Gustav Oberländer, dessen weise Grossherzigkeit die Forstindustrien beider Kontinente einander näher gebracht und gegenseitiges Verstehen and guten Willen gefördert hat.

WEIDMANN'S DANK



Lee Robinson  
John Raine  
John W. Watzek, Jr.  
W. M. Brown  
Robert B. Goodman  
D. R. Camp  
Fredric H. Jure  
George F. Cornwall  
Ed Walker  
Jimm  
Farrell  
L. K. Pomeroy  
William Compton





ON THE HAMBURG-AMERICAN LINER "NEW YORK"  
BOUND FOR CUXHAVEN

Back Row (left to right): W. R. Brown; C. H. Guise; Lee Robinson;  
John W. Watzek, Jr.; Wilson Compton, Jr.; T. S. Walker;  
George F. Cornwall.

Center Row (left to right): R. B. Goodman; Jerome J. Farrell;  
Dr. Wilson Compton; Mrs. Overstreet; John Raine.

Front Row (left to right): P. R. Camp; Mrs. Camp and baby daughter;  
Miss Frances Brown; Mrs. Lee Robinson; L. K. Pomeroy.

1301

## BARON von KEUDELL

HOHEN LÜBBICHOW

NEAR BERLIN

This estate consists of 5200 acres,  
mainly Scots pine, with newer  
plantings of beech and oak. Date  
of visit, August 5, 1934.







#### WELCOME TO HOHEN LÜBBICHOW

Baron von Keudell, third from left, wearing field glasses, greets the Oberlaender party upon their arrival at his forest estate Hohen Lübbichow, near the Oder River, in Prussia, north and east of Berlin. The Baron honored us by making a special trip home from Tannenburg, in East Prussia, whither he had been called to assist in the funeral arrangements for the beloved President Hindenburg.



#### SMART TURNOUTS

In smartly turned our carriages and on foot, too, the Oberlaender visitors saw all the points of interest at Hohen Lübbichow, under the personal guidance of Baron von Keudell. With headsuncovered, westood with him at sunset, before the village church, to hear ancient bells toll for the departed President.

#### BEECH PLANTATION

Baron von Keudell has long recognized the value of broad-leaved trees for enriching forest soil, particularly where conifers have been grown for long periods of time. Here is a beech plantation seen on a rainy day at Hohen Lübbichow, his estate in Prussia.



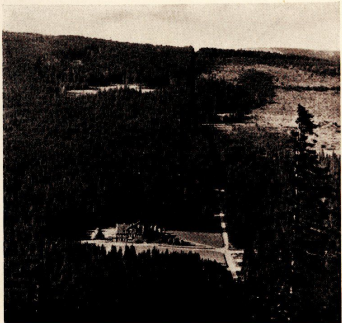


# KAMMERHERR von KALITSCH

BÄRENTHOREN

NEAR DESSAU, ANHALT

This estate, near Dessau in Anhalt,  
consists of 2000 acres of almost  
pure Scots pine. Date of visit,  
August 6, 1934.



## LUDWIGSBAUDE

Base from which the Oberlaender party took the memorable hike over the flank of the Isergebirge into Oberschreiberhau, through the spruce forests of Count Schaffgotsch, ending with sore feet and aching muscles, at Kurhotel Lindenhof.





#### LAIRD OF BÄRENTHOREN

Kammerherr von Kalitsch proudly leads the Oberlaender party through his Scots pine estate, near Dessau, to give us visual proof of the correctness of certain theories of forest regeneration, which he put into practice many years ago. At his right is C. H. Guise of Cornell University.



#### SEEING BÄRENTHOREN

Transport systems of all kinds carried the Oberlaender party through the forests of Germany and Czechoslovakia. Most popular of all were such informal turnouts as those provided by the venerable Kammerherr von Kalitsch at Bärenthoren.



#### A FOREST CLASSIC

Celebrated in German forest literature is "Bärenthoren", Scots pine estate of Kammerherr von Kalitsch, near Dessau, where litter collection and grazing are prohibited and where natural regeneration is the policy. W. R. Brown in the foreground.

130 |

#### BANANAS AL FRESCO

Like a troop of small boys on a holiday, the Oberlaender party munched bananas on the streets of Dessau. The smiling Dr. Compton, next to end on the right, is credited with discovering them in a nearby shop.





# REICHSGRAF von SCHAFFGOTSCH

WARMBRUNN

NEAR HIRSCHBERG, RIESENENGBIRGE

This estate in German Silesia, consists of 58,000 acres, largely spruce of excellent quality. Date of visit, August 8-9, 1934.



## IN GERMAN SILESIA

Kurhaus of Bad Flinsberg, in the Riesengebirge, near Hirschberg, stirs memories of the Schaffgotsch forest estate. Good beer and soothing music sped fleeting hours, with genial hosts.





OBERFORSTMEISTER KÖHLER

To him is entrusted the administration of the forest estate of His Excellency, the Reichsgraf von Schaffgotsch, in the Riesengebirge and Isergebirge, with headquarters at Warmbrunn, near Hirschberg. Proud is he of that pipe, given to him by his good wife on the twenty-fifth anniversary of their marriage. The Schaffgotsch holdings, chiefly spruce, comprise 58,000 acres.



PEELING SPRUCE PULPWOOD

Spruce pulpwood of an excellent quality is produced on the estate of Count Schaffgotsch in the Riesengebirge. Before sending it to the pulp and paper mills it is peeled a second time, as shown in the illustration.

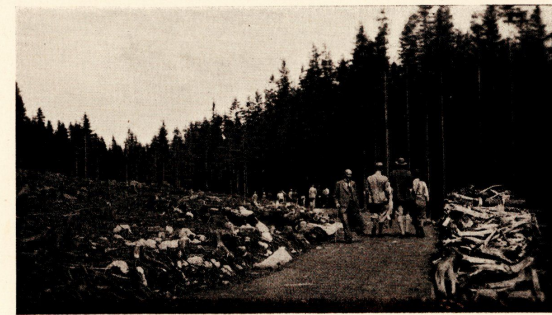


SPRUCE OF THE ISERGERBIRGE

A revelation to the American lumbermen was the exceptional quality of the spruce in that great chain of mountains, separating Germany and Czechoslovakia. Here are some splendid specimens that caught the visitors' eyes in the Isergebirge.

CLEAN CUT SPRUCE AREA

Clear felling and replanting is the forest procedure on the Schaffgotsch estate in the Riesengebirge. A carefully planned sustained yield program is followed, which allows a twenty per cent safety factor for storm damage.



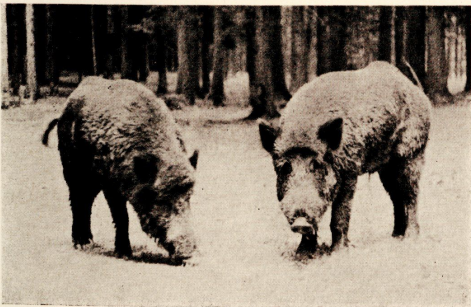


# GRAF von HOLNSTEIN

MILKEL

NEAR BAUTZEN, SAXONY

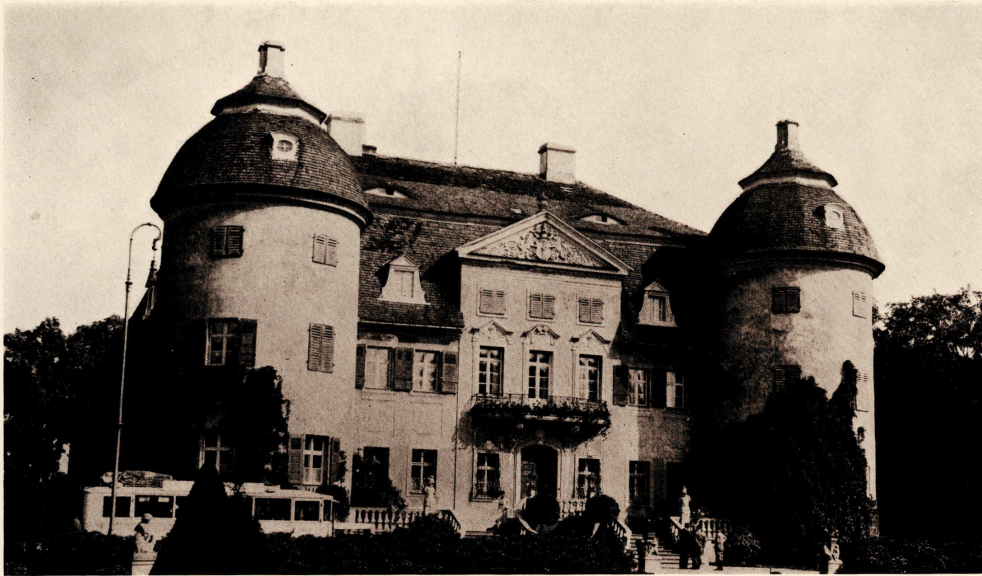
Situated at Milkel, near Bautzen,  
this estate consists of 3500 acres of  
forest lands, almost all Scots pine.  
Date of visit, August 12, 1934.



## FRIENDLY FELLOWS, TOO

Wild boars on the estate of His  
Highness Prince Schwarzenberg, in  
Czechoslovakia. Having just been  
fed by a gamekeeper, they are quite  
tame and gladly pose for American  
cameras.





#### HOLNSTEIN CASTLE AT MILKEL

The delightful home of the late Count Holnstein, in Saxony, seems to reflect the very solidity of private forest ownership in Central Europe. The members of the Oberlaender party are grateful to have had the privilege of knowing its late owner, whose death occurred in October, 1934. Of our visit Countess Holnstein has graciously written: "You have all sent such kind words of thanks for the little we could do for you at our home and surely Count Holnstein would have been pleased to have read them. All is sadly changed since then at our dear old place."



#### SUNDAY AFTERNOON AT MILKEL

The excursion by carriage through the Scots pine forests of Count Holnstein and the delightful dinner in the fine old castle, make August 12, 1934, a day never to be forgotten. Here again we felt the warmth of sincere hospitality.

#### COUNT HOLNSTEIN

The Oberlaender party is happy to have known this friend of the forest and friend of America, who died within two months of our visit to his home at Milkel. Here we see him, pointing out to us the items of interest in his forests of Scots pine.



#### YOUNG PINE PLANTATION AT MILKEL

Dr. Franz Heske explains the character of the Count Holnstein forest holdings and takes us to see the plantations of young Scots pine, on this interesting estate of 5600 acres.



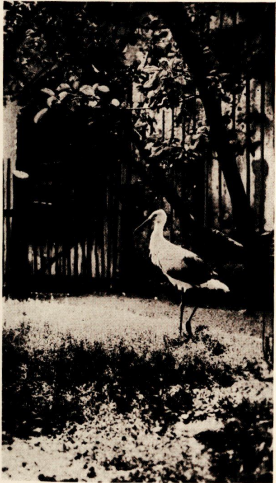


# BARON VIETINGHOFF-RIESCH

NESCHWITZ

NEAR BAUTZEN, SAXONY

Forest estate Neschwitz, has 2340  
acres of Scots pine, besides agri-  
cultural lands. Date of visit, August  
12, 1934.



HERR STORK

Although they kept this fellow for a pet, a certain Forstmeister and his good wife, had no children. The best they could boast were two charming dachshunds.





**BARON von VIETINGHOFF-RIESCH**

With falcon and dog, the genial master of forest estate Neschwitz, near Bautzen, spends many happy hours in the field. Neschwitz has been in the Vietinghoff-Riesch family since 1763, and was formerly owned by August the Strong, who erected some of the buildings on the estate.



**CASTLE PARK AT NESCHWITZ**

The castle grounds at Neschwitz seen from the balcony of the fine old house. Neschwitz estate consists of over 4000 acres of land, of which more than half are in forests, chiefly Scots pine.

**TREES OF TODAY AND OF TOMORROW**

A striking scene in the Scots pine forest of Baron Vietinghoff-Riesch, showing a wide range of age classes. "Our fathers planted for us; we plant for our children. The element of time is of no great importance. Our trees were ready for us; theirs will be ready for them."



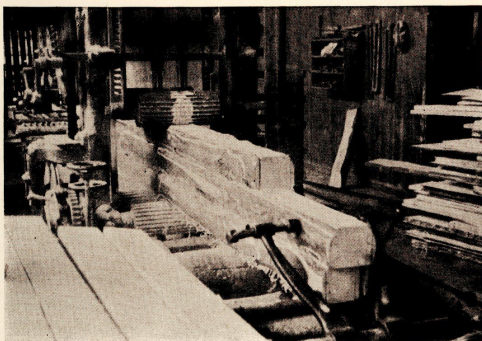


# GRAF von ARNIM

MUSKAU

NEAR ROTHENBURG, PRUSSIA

Graf von Arnimischen Waldgut-  
stiftung, consists of 60,000 acres  
of forest lands, almost all Scots  
pine. Date of visit, August 13-14,  
1934.



## MILLING SCOTS PINE

A glimpse of the sawmill at Flins-  
berg, in Silesia, sawing three Scots  
pine logs at one setting. The excel-  
lent quality of the lumber from such  
small logs, proved a revelation to  
the American visitors.





VON ARNIM CASTLE AT MUSKAU

Gloriously situated in the heart of Pückler Park, pride of all Silesia, stands the beautiful castle of Count von Arnim. Its hospitable halls were opened wide to members of the Oberlaender expedition, who cherish memories of a delightful dinner party given by the Count and the charming Countess on August 13, 1934.

PÜCKLER PARK: BEAUTY SPOT OF MUSKAU

At Muskau, between the rivers Neisse and Spree, stands the von Arnim castle, surrounded by Pückler Park, over 1300 acres in extent. This gem of landscape architecture is the work of its former owner, Count Hermann von Pückler, who occupied the estate from 1811 to 1845.



VON ARNIM SAWMILL AT WEISSWASSER

One of the two sawmills of Count von Arnim. This one at Weisswasser, not far from headquarters at Muskau, is equipped with five log gangs and one planing machine. This mill saws about five million feet of logs a year.



EDGE OF A CLEAR-CUT AREA

A fine stand of Scots pine on the forest estate of Count von Arnim, in Prussia, showing the tall, clean trees on the edge of a recent cutting.



AT MUSKAU

Graf von Arnim (left) with Oberforstmeister Bruhm (right) on the castle grounds at Muskau, Prussia, headquarters of the Graf von Arnimischen Waldgutstiftung, a complete industrial empire, supporting 3677 people.



WOOD-GAS TRACTOR

On the von Arnim estate, the Oberlaender party inspects a tractor, whose fuel is wood gas generated by the tank-like device mounted on the left front. The tractor is towing two wagon loads of pulpwood.





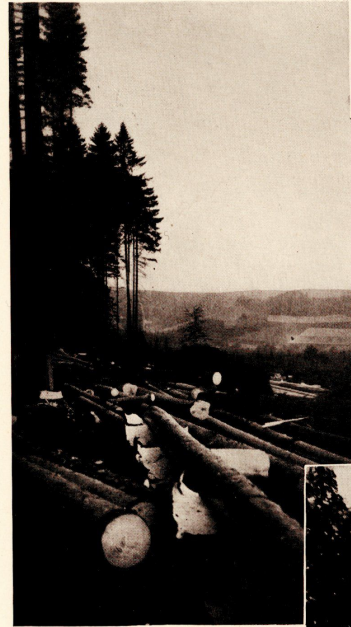
ON THE DIENER von SCHÖNBERG ESTATE

Members of the Oberlaender party on a tour of the spruce forests of Dr. Diener von Schönberg, in Southern Saxony, not far from the border of Czechoslovakia. Spruce of the Erzgebirge is famous for long, clean bolls and heavy yield per hectare.



FELLING A SPRUCE

Woodsmen's tools, wholly different than those used in America, were seen for the first time on the logging operations of the Diener von Schönberg estate in Saxony.



HARVESTING SPRUCE

Bark for tanneries, branchwood for toys and fuel, small logs for pulpwood, large logs for building material—that is forest utilization in Germany, the envy of every visiting American forest owner.

SCHLOSS PFAFFRODA

Picturesque Pfaffroda, near Albernau, Germany, has been the seat of the distinguished family Diener von Schönberg, since 1350. Saxon kings and princes have been frequent visitors to Pfaffroda. King William Frederick was a house guest on July 9, 1914, only a few weeks before the flames of war swept over Europe. Pfaffroda's hospitality is known throughout all of Saxony.





# FORSTLICHE HOCHSCHULE

THARANDT

NEAR DRESDEN, SAXONY

The school forest at Tharandt, near  
Dresden, embraces 4000 acres of  
spruce and Scots pine. Date of  
visit, August 11, 1934.



THE OLD MILL

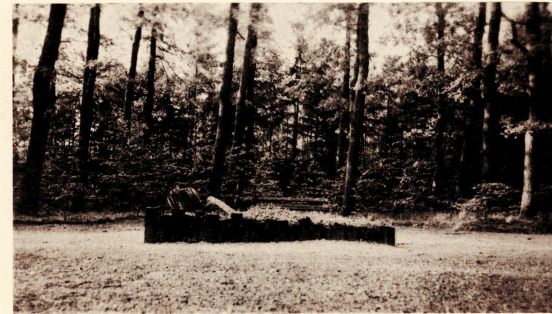
Landmark of Potsdam, symbol of German faith in  
German justice. When Frederick the Great ordered  
it removed, its owner firmly stood his ground with  
this immortal utterance: "There are still judges in  
Berlin."





#### THARANDT'S WOODED HILLSIDES

In the little valley below nestles the famous Forstliche Hochschule, oldest forest school in the world. Occupying the chair of its illustrious founder is our friend and guide, Dr. Franz Heske, from whose delightful hillside home this beautiful vista may be seen.



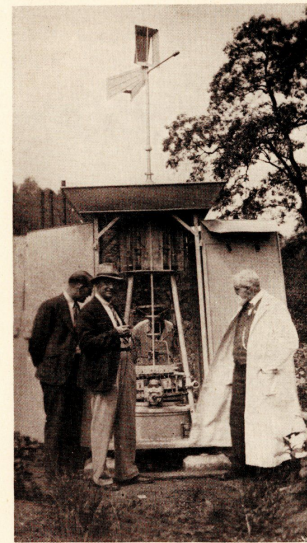
#### FOUNDER'S TOMB

Here sleeps Heinrich Cotta on the rugged hillside of Tharandt, in the shadow of his eighty oaks, ranged about him like the candles on a birthday cake, living symbols of his many good deeds.



#### SPLENDID SCOTS PINES AT THARANDT

In the school forest at Tharandt, one may see Scots pine at its best. This hardy species, which seems to thrive on poor soils, does best where litter gathering and grazing are prohibited. This 4000-acre forest occupied lands that were hopeless swamps when Cotta came first to Tharandt.

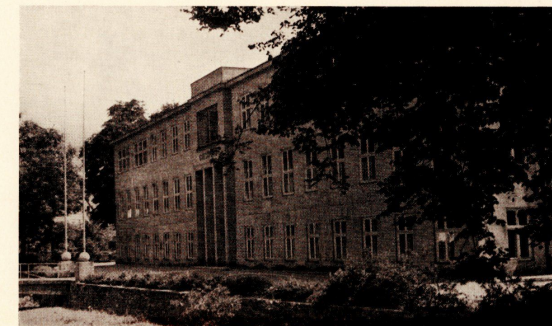


#### AIR TESTING STATION

Remarkable instruments for testing air for toxic gasses have been developed at the Forstliche Hochschule at Tharandt, Saxony. These instruments have been of great value in the protection of agricultural and tree crops.

#### COTTA HALL: THARANDT

One of the three main buildings of Forstliche Hochschule at Tharandt, Saxony. This one is named in honor of its illustrious founder, Heinrich Cotta, who began teaching forestry at Zilbach in 1795, removing to Tharandt in 1811.



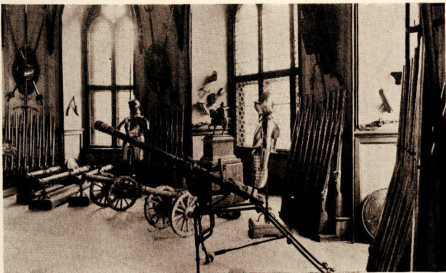


# PRINZ HOHENLOHE-LANGENBURG

SCHLOSS ROTHENHAUS

NEAR KOMOTAU, CZECHOSLOVAKIA

This estate in Bohemia, near Komotau, consists of 18,000 acres of excellent spruce, in addition to agricultural holdings. Date of visit, August 16, 1934.



## ANCESTRAL ARMOR

Armory of the Schloss Hluboká, Schwarzenberg seat near Budweis, with its splendid collection of ancient weapons and armor, is said to be one of the finest exhibits of authentic family relics in Central Europe.





#### SCHLOSS ROTHENHAUS

Family seat of His Highness Prince Max Hohenlohe-Langenburg, near Gorkau, Czechoslovakia. The history of Rothenhaus estate can be traced to 1400, when a knight named Dietrich Kraa is mentioned as owner. The present family ownership dates from 1771. Schloss Rothenhaus, with its charming environs, is famed throughout Europe for its hospitality. Royal visitors include the kings of Spain and Greece. Many of the most famous tennis players of all times have played on its courts.



#### SCHOOL CAN WAIT

The young son of Prince Hohenlohe-Langenburg was hard at work on his lessons when the Americans arrived at Rothenhaus. In spite of the best efforts of his tutor he suspended his pursuit of knowledge until the Oberländer party concluded its visit.



#### SPRUCE OF THE ERZGEBIRGE

Few places in the world boast better spruce than the Erzgebirge and the Böhmerwald. Here are some tall, clean fellows on the forest estate of Prince Hohenlohe-Langenburg, in Czechoslovakia, near the border of Saxony, standing nearly 100,000 feet to the acre.



#### FAMILY MAUSOLEUM

Ancestors whose laughter in childhood rang through the baronial halls of Rothenhaus and whose feet once trod the green slopes of the Erzgebirge, sleep in the family chapel near the castle.





#### IN OLD BOHEMIA

Picturesque street in Krumau, Czechoslovakia, farthest point south reached on the Oberlaender tour. It was here that the Oberlaender tour broke up on August 22, with a farewell dinner at Hotel Alt Wien.

## GRAF CZERNIN

CHUDENICE

NEAR KLATTAU, CZECHOSLOVAKIA

Forest Estate Chudenice, near Klattau, Czechoslovakia, comprises 12,500 acres of timber lands, largely spruce, with mixtures of fir, and beech. Date of visit, August 18, 1934.

