

Two Ranger Station Plans Digitized from  
*Landscape Engineering in the National Forests*  
by Frank A. Waugh, Collaborator  
U.S. Department of Agriculture, Forest Service, 1918.  
U.S. Forest Service Headquarters History Collection  
Durham, NC

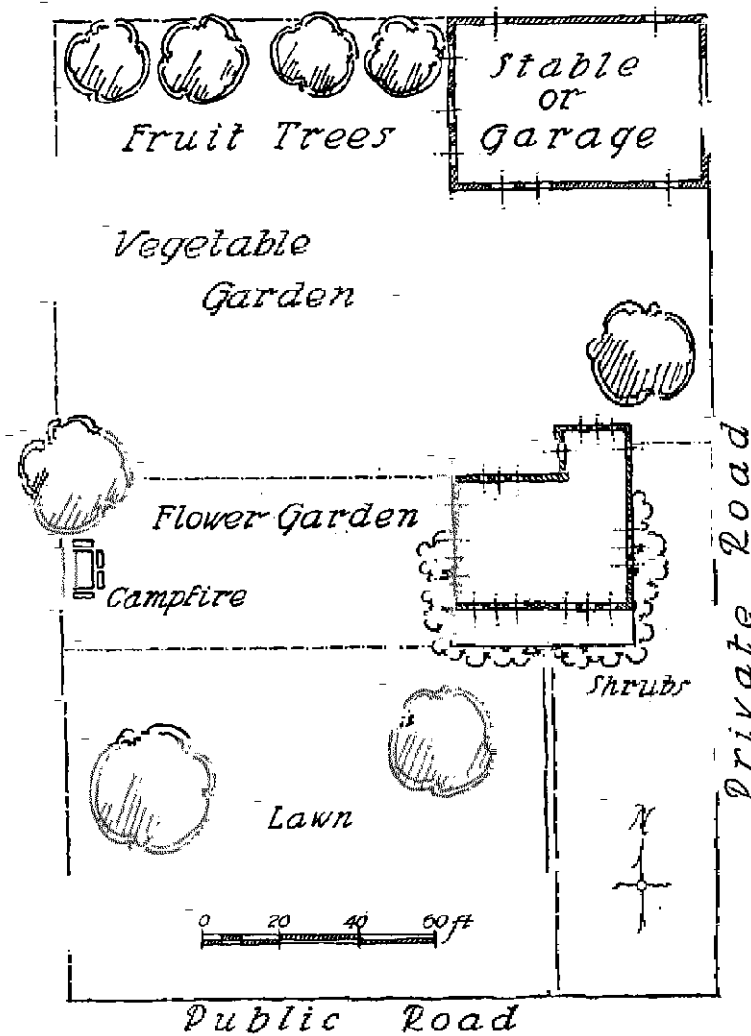


FIG. 5.—Suggestive plan for ranger station grounds.

Fig. 5.—Suggestive plan for ranger station grounds

[Drawn by Frank A. Waugh]

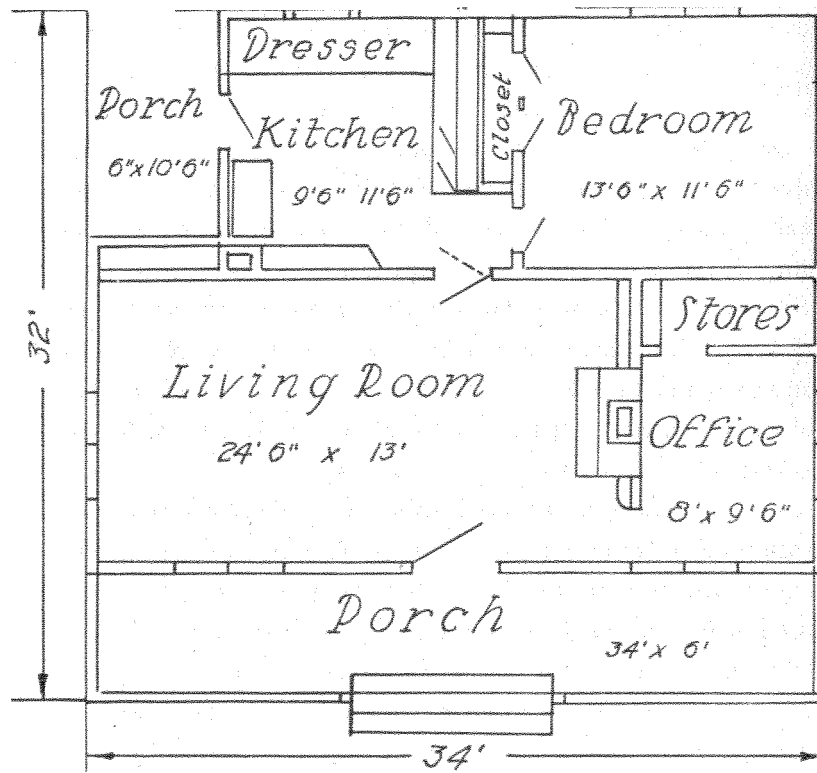


FIG. 6.—Model ranger station—Plan.

[p. 36, Drawn by Aldo Leopold]